



Amlib

Library Management System

Amlib SIP2: Getting Started Guide

Version 6.1

Last Updated: 4 February 2015

Amlib SIP2: Getting Started Guide

© 2014 OCLC (UK) Ltd

ALL RIGHTS RESERVED. Permission is granted to electronically copy and to print in hard copy portions of this document for training purposes by licensed users of the Amlib Library Management System. Any other uses – including reproduction for purposes other than those noted above, modification, distribution, republication, transmission, re-transmission, modification, or public showing – without the prior written permission of *OCLC (UK) Ltd* – is strictly prohibited.

Support:

Australia: 1300 260 795 (Local call cost in Australia)

Email:

support-anz@oclc.org

Amlib Help Desk (TOPDesk):

<https://servicedesk.oclc.org/tas/public/>

OCLC Amlib Support Documentation:

<https://www.oclc.org/support/services/amlib.en.html>

Sales:

Australia: 1300 260 795 (Local call cost in Australia)

Fax: +61 (0) 3 9929 0801

Email: sales-amlib@oclc.org

www.oclc.org/en-AU/

Table of Contents

OVERVIEW.....	5
Summary.....	6
INSTALLATION OF THE SIP2 MANAGER AND SIP2 SERVICE.....	7
AMLIB CONFIGURATION MANAGER.....	7
AMLIB SIP2 MANAGER.....	7
Login Instructions.....	7
Logout Instructions.....	10
Creating an Instance.....	10
Creating a Listener.....	13

OVERVIEW

SIP2 (**Standard Interchange Protocol, Version2**) provides communication between the Amlib Library system and other SIP2 compliant computer based applications. It provides controlled access to certain information from Amlib (for example details about Patrons or Items) via a TCP/IP connection through a nominated Port.

These applications include Self-Service Circulation (DIY) terminals, accessing EBooks from Online Suppliers, managing Library Internet PC processes such as PC Reservations, electronic resources and other communications. EBook applications need to verify that a patron has proper borrowing rights before allowing downloads of EBooks.

Request messages to perform operations are sent via a connection and responses sent in return.

There are three components that comprise the SIP2 module:

- **SIP2 Server** which runs the **AmlibSIP2Service** in Windows

- **Configuration Manager** enables settings to be made in relation to:
 - **Database** (Database definition, Usernames and Passwords to the Database)
 - **SIP2 Server** settings (Database prefix, Port Number and maximum No of connections)
 - **Logging** settings (Enabling, Log File size and Archive Files)

- **SIP2 Manager** client program which is used to maintain the SIP2 settings including:
 - Listener
 - Instance settings. These include:
 - Parameters
 - Messages, Message fields and values

Note: The SIP2 Manager requires a code to be entered at Login to set the licence configuration. This is supplied by OCLC Amlib Support

A Self Check device is the connection initiator and the SIP2 server is a TCP/IP listener

- From Amlib Version 5.4, a multi-threaded SIP2 Server is a replacement for the existing Amlib DIY module. There can be multiple listeners using a single instance
- The multi-threaded server supports multiple TCP/IP connections from SIP2 clients whereas the Version 5.3 and older versions of the Amlib DIY module only supported a single SIP2 client connection
- Each instance has its own set of messages, message fields and parameters. The parameters are not dependent on SIP2 client vendor types. The new SIP2 Manager is able to customise messages, their fields and parameters to a greater degree than in the previous version

Functionality exists within the SIP2 Manager for the creation, editing or deleting of Listeners, associated Instance parameters, Instance messages and Instance message fields and values

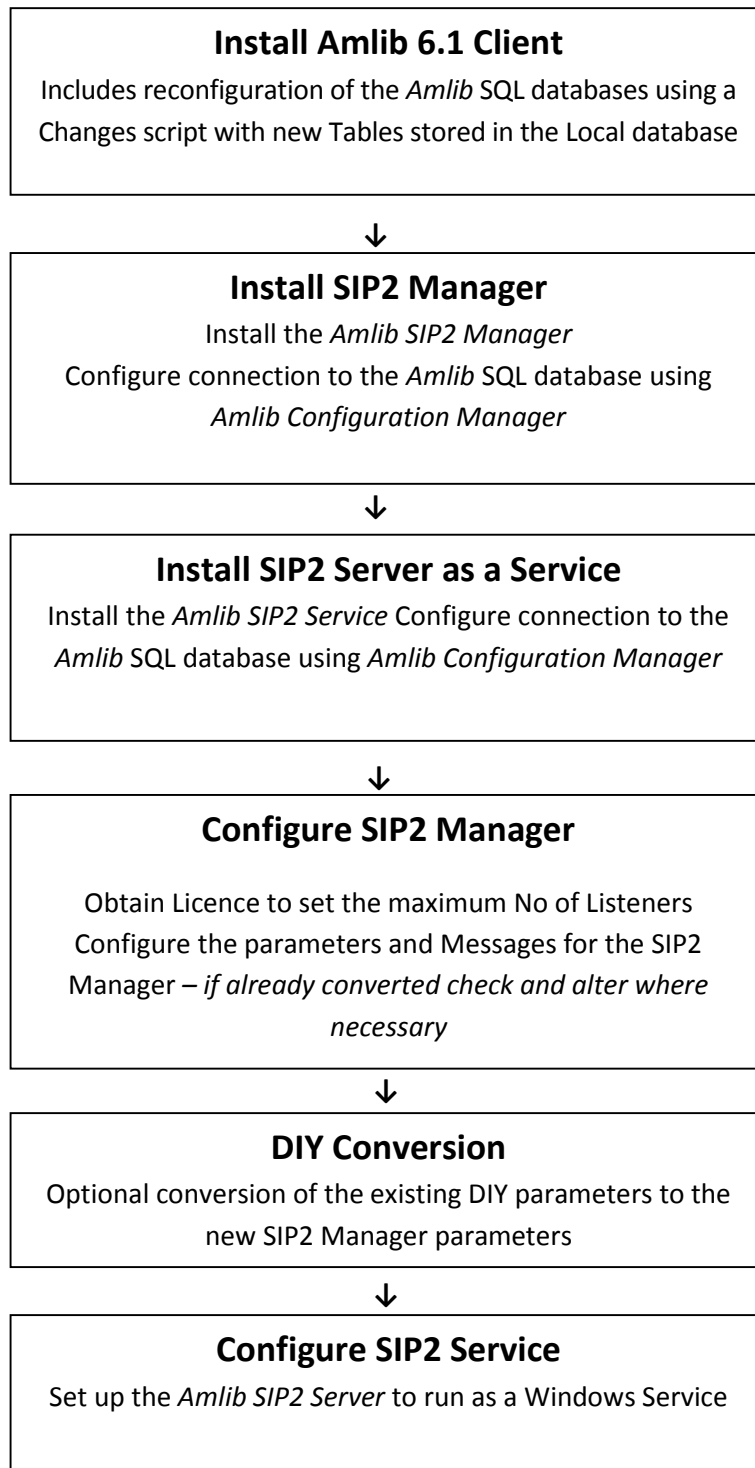
SIP2 redevelopment includes the reorganisation of existing parameters and addition of new parameters. The new parameters will facilitate vendor independent coding. It is possible to convert

Amlib SIP2: Getting Started Guide

existing Amlib DIY parameters to the new SIP2 Parameters during the Version 6.1 upgrade or later using the SIP2 Manager.

Summary

The following flowchart summarises the steps involved in setting up the *Amlib SIP2 Manager and SIP2 Service applications*:



Amlib SIP2: Getting Started Guide

INSTALLATION OF THE SIP2 MANAGER AND SIP2 SERVICE

Please follow the **SIP2 Manager and Service Installation Guide** available from on the OCLC website, from Downloads and Software Updates > Version 6.1 > [Installation Guides > SIP2 Service](#) to install **SIP2 Manager** and **SIP2 Service**. The Default path is Program Files\OCLC\Amlib SIP2 Manager. The Amlib SIP2 Service is installed with a startup type of *Automatic* but not *Started*. A manual start is required after configuring the database settings etc. using the Amlib Configuration Manager below.

AMLIB CONFIGURATION MANAGER

The *Amlib Configuration Manager* eliminates the need for separate **.ini** files for *Amlib* and **SQL**.

The *Manager* uses an **AmlibConfig.xml** file to control how the particular *Amlib* application or service connects the *Amlib* SQL databases (and the *Amlib* client).

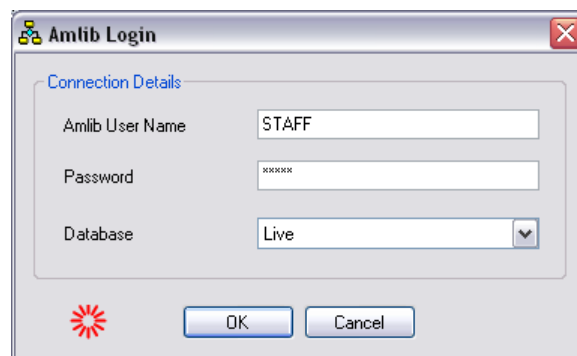
Each application or service will have its own **AmlibConfig.exe** file in the same folder containing the program executable.

- **Please Note:** This configuration automatically has the **AM (Live)** and **TE (Test)** databases defined (but no connection details set).

AMLIB SIP2 MANAGER

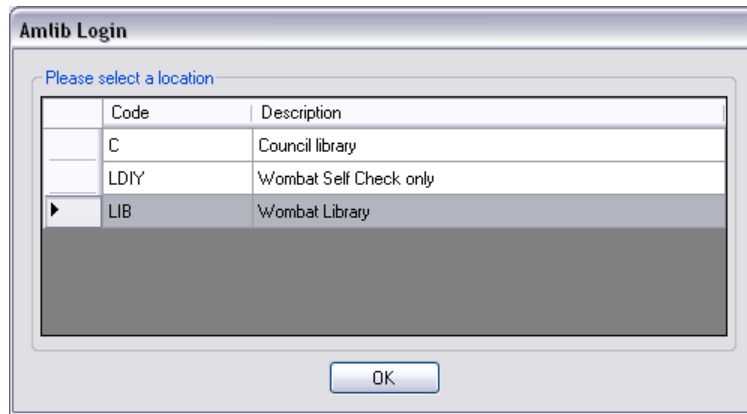
Login Instructions

1. Launch the *Amlib SIP2 Manager* client – the Connection Details window will display:

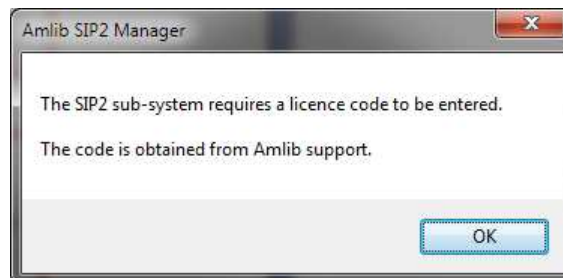


2. Enter a valid Amlib User Name and Password (not case-sensitive)
3. Select a Database – this should be the same **Live** database you use for *Amlib*

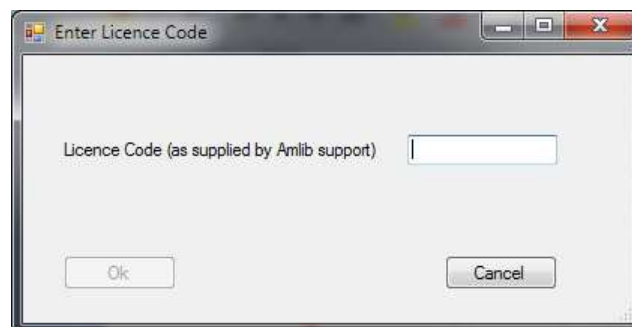
4. Select the **OK** button – the Please select a location window will display:



Choose a login location and Select the **OK** button (by default, the Location setup for your Username in the *Amlib Installation* settings will be highlighted). The **first time** the login occurs, The *Amlib SIP2 Manager* dialogue box will display. It will be necessary to enter a code for the *Number of Licences* the site is configured to use. If you do not have the code it will be needed before the setting up of the Manager can go any further. Contact Amlib Support to obtain the relevant code

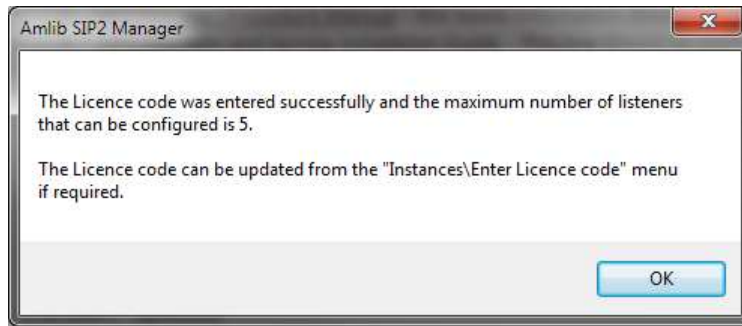


5. Select **OK**
6. The *Enter Licence Code* dialogue box will display



7. Enter the licence code and Select **OK**

8. The *Amlib SIP2 Manager* confirmation box will appear showing the No of licenses applied

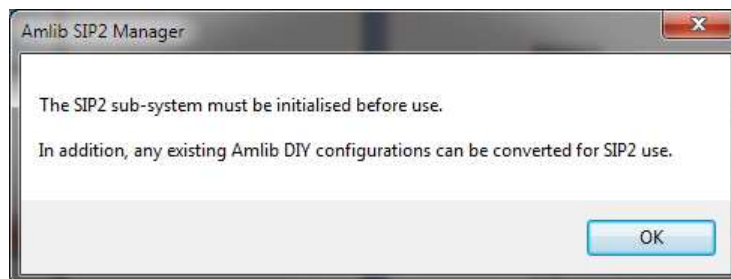


Note: The licenses are set up as a range:

- 1 listener
- 2-5 listener s
- 6-10 listeners
- 11-20 listeners
- 21- Unlimited listeners

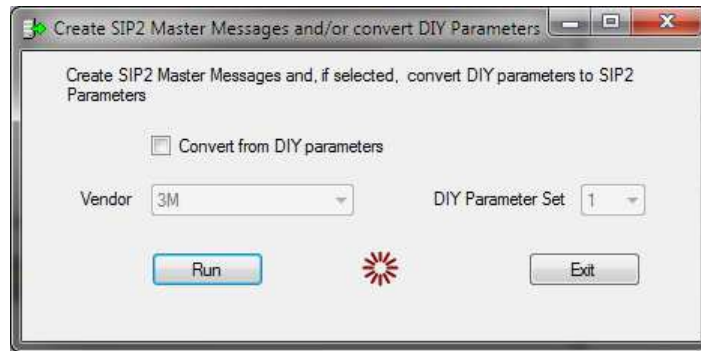
9. Select **OK**

The *SIP2 Manager* box displays to give the information about initialising the SIP2 system before use. It is possible to convert existing DIY parameters to initialise the system



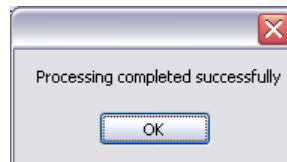
10. Select **OK** to continue

11. The Create SIP2 Master Message and/or convert DIY Parameters Dialogue box will display

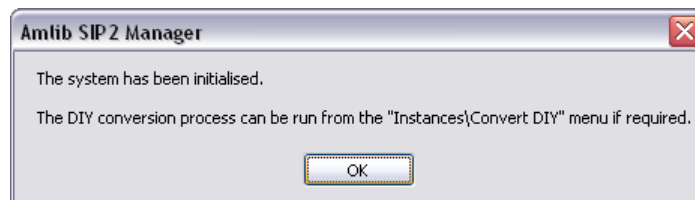


12. Select the Convert from DIY parameters if a conversion is required from the parameters set in DIY (suggested). Select the relevant parameter set and vendor

13. At the finish, a message will display



If the Conversion process is not run as part of the initial process, the DIY conversion process can be run from the **Instances > Convert DIY** Menu if required.



Help

A context sensitive Help system is available within the *Amlib Sip2 Manager* client using the F1 key:

- From the menu, select **Help > Help** – the Help guide will then open

In addition, a **Getting Started** guide and the full **Procedures Manual** (both in **PDF**) can be accessed from the Help menu.

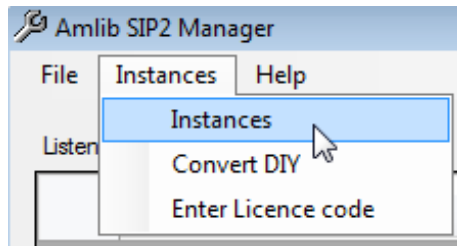
Logout Instructions

1. From the menu, select **File > Exit**
2. The *Amlib SIP2 Manager* client will close

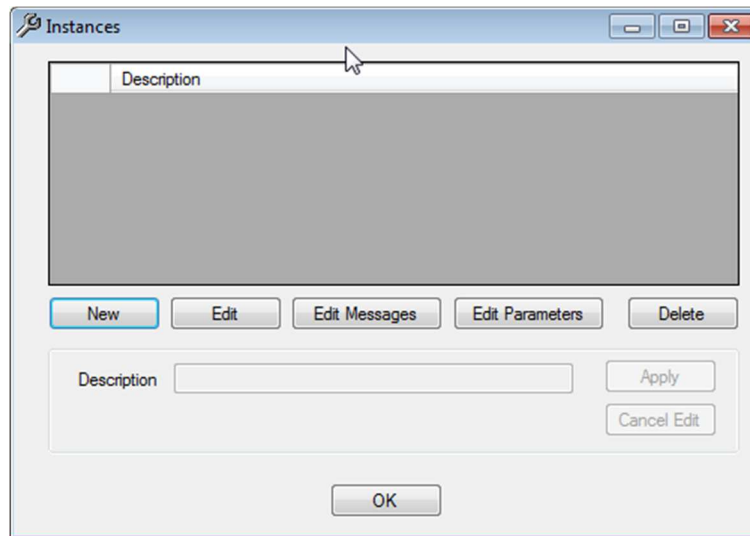
Creating an Instance

It is possible to create a New Instance based on an Instance created previously e.g. for different branches. **This step does not need to be completed if you have converted your settings from DIY**

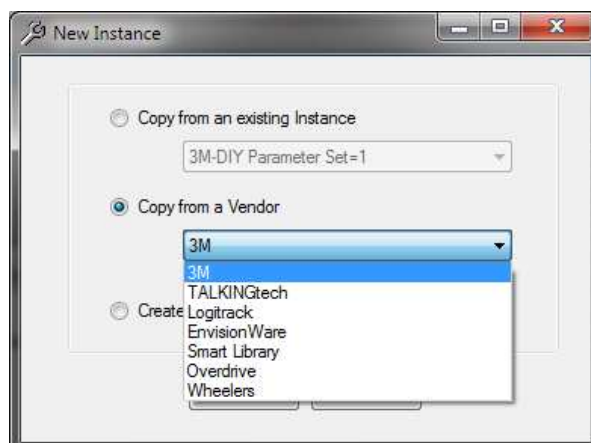
1. Go to **Instances > Instances**



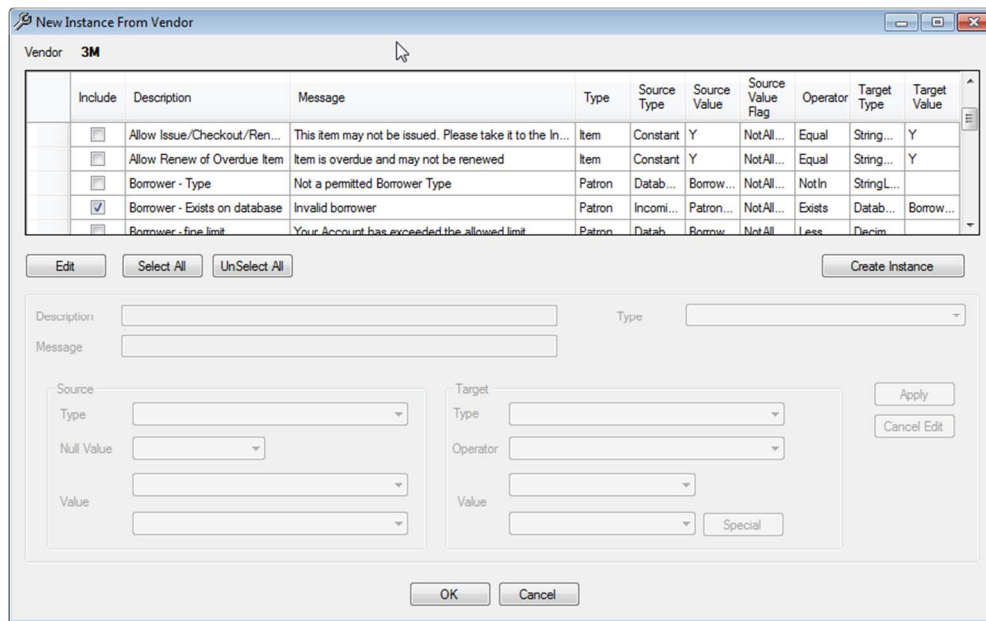
2. Select **New**



3. It is possible to
 - Copy from an existing Instance
 - Create an instance using Vendor defaults
 - Create a default Instance (not recommended without Amlib support)
4. Make a selection and Select **OK**



5. Select the parameters you would like to include in the instance



6. Select on **Create Instance**, then Select **OK**

7. From the Instances Window it is possible to:

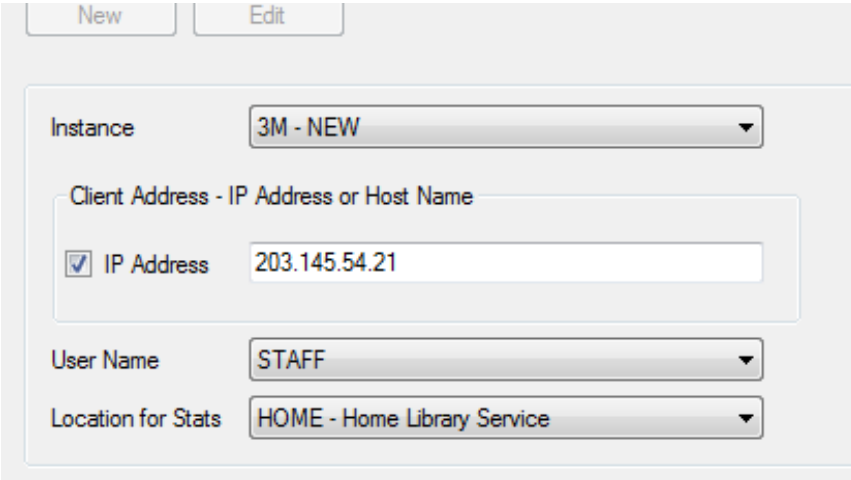
- Edit Instance Description
- Edit Messages
- Edit Parameters
- Delete Instances

8. Select **OK** to go back to the main screen

See the full Procedure Guide for more information

Creating a Listener

1. From the main *SIP2 Manager* screen Select **New**
2. Select an *Instance* to use from the drop down menu
3. Enter the IP address or host name of where the client will be connecting from
4. Choose an *Amlib* username and a *Location for Stats*



The screenshot shows a web-based configuration form for creating a new listener. At the top, there are two buttons: 'New' and 'Edit'. Below them, the form contains several fields:

- Instance:** A dropdown menu with '3M - NEW' selected.
- Client Address - IP Address or Host Name:** A section containing a checked checkbox for 'IP Address' and a text input field with the value '203.145.54.21'.
- User Name:** A dropdown menu with 'STAFF' selected.
- Location for Stats:** A dropdown menu with 'HOME - Home Library Service' selected.

5. Select **Apply** and now the SIP2 Service should be ready to accept connections from the specified IP or Hostname
6. See the full [SIP2 Manager Procedure Guide](#) available on the OCLC Website, from under [Downloads and Software Updates > Version 6.1 > Installation Guides > SIP2 Service](#) for more information