

Amlib SIP2 Manager and Service Installation Guide

Version 6.1

Last Updated: 4 February 2015

Amlib SIP2 Manager and Service Installation Guide

© 2014 OCLC (UK) Ltd

ALL RIGHTS RESERVED. Permission is granted to electronically copy and to print in hard copy portions of this document for training purposes by licensed users of the Amlib Library Management System. Any other uses – including reproduction for purposes other than those noted above, modification, distribution, republication, transmission, re-transmission, modification, or public showing – without the prior written permission of *OCLC (UK) Ltd* – is strictly prohibited.

Support:

Australia: 1300 260 795 (Local call cost in Australia)

Email:

support-anz@oclc.org

Amlib Help Desk (TOPDesk):

<https://servicedesk.oclc.org/tas/public/>

OCLC Amlib Support Documentation:

<https://www.oclc.org/support/services/amlib.en.html>

Sales:

Australia: 1300 260 795 (Local call cost in Australia)

Fax: +61 (0) 3 9929 0801

Email: sales-amlib@oclc.org

www.oclc.org/en-AU/

WELCOME	5
OVERVIEW	5
Applications.....	5
BEFORE YOU BEGIN THE INSTALLATION.....	6
Read the Installation Notes First.....	6
Frequently Asked Questions	8
INSTALL THE AMLIB SIP2 MANAGER	10
Step 1: Install Amlib SIP2 Manager Application.....	10
Step 2: Configure the Amlib Configuration Manager.....	14
Set Up Database Configuration	14
Once complete, the connection can be tested:	16
INSTALL the SIP2 SERVER SERVICE	18
Step 1: Install Amlib SIP2 Service	18
Step 3: Configure the SIP2 Server Tab.....	22
Step 4: Start the SIP2 Service	23

Amlib SIP2 Manager and Service Installation Guide

WELCOME

Welcome to the *Amlib SIP2 Manager 6.1* Installation Guide. You must be on **Amlib Client 6.1** before installing this.

This guide contains information on how to install the **Amlib SIP2 Manager** and its associated **Amlib Configuration Manager**. It also contains instructions on how to setup the SIP2 Server to run as a Service.

OVERVIEW

The *Amlib SIP2 Manager* module is a new module, it is an enhancement to the current DIY/SIP2 Amlib Interface. It provides a process to convert current DIY parameters over to the new application.

This will take place during the Version 6.1 upgrade or can be done later through the program if preferred.

Applications

In addition to the *Amlib* client, there are two applications provided by *OCLC (UK)* Limited that users need to install to implement the interface:

1. **Amlib SIP2 Manager**

This application is used to configure parameters, messages, message values and fields

2. **Amlib SIP2 Server (run as a Service)**

- This application runs the *Amlib SIP2 Manager* as a Windows Service (the Service is responsible for automatically executing the processes according to the defined schedules)

In addition to the above applications, there is a separate *Amlib Configuration Manager* application (installed at the same time) which is used to configure the connection between the selected *Amlib SIP2 Manager* application(s) and the *Amlib* SQL databases.

This guide shows you how to install the Amlib SIP2 Manager (and how to set it up as a Service if desired), in addition to the installation (and configuration) of the *Amlib Configuration Manager*. There is a separate manual covering the operation of the Amlib SIP2 Manager module itself.

NOTE: If you are re-installing this newer version, uninstall current version. All your listeners and setup will remain un-changed. All you will need to do is to use the configuration manager to re-connect service to your database as part of the install process.

BEFORE YOU BEGIN THE INSTALLATION...

Read the Installation Notes First

Please carefully read the entire installation guide prior to commencing the actual *Amlib SIP2 Manager* Client release installation.

If you have any questions please contact:

Online Help Desk and Access:

<https://servicedesk.oclc.org/tas/public/index.jsp>

For Log in and password details contact Support:

Amlib Support:

Email:

support-anz@oclc.org

Telephone:

1300 260 795

FREQUENTLY ASKED QUESTIONS

Question: Do I need a serial key to install the *Amlib SIP2 Manager* module?

No. A serial key is not required to install the Amlib SIP2 Manager module, however a serial key **IS** required to configure your SIP2 devices. Please contact Amlib support for this using the details above. A serial key will be issued for the number of device licenses your site has purchased.

Question: Do I need to upgrade my *Amlib* client?

Yes. The primary *Amlib* client must first be updated to *Amlib 6.1* – the new *Amlib SIP2 Manager* client cannot be run on previous versions of the *Amlib* client.

- As part of the new 6.1 version of SIP2 Manager and SIP2 Services a new Login request/response 93/94 message has been added for those using 3M vendor products that requires a login.
- In order to take advantage of this upgrade you will either need to upgrade Amlib Client to version 6.1 and install the new SIP2 Manager and Services
- OR If you do not wish to upgrade your Amlib Client at this point in time, but still would like to take advantage of this upgrade to SIP2 Manager and Services.
- Then Install the new SIP2 manager and SIP2 services and then please contact Amlib Support via TopDesk and request a script that will be required for this to work correctly - the script you need is '**AddLoginToSIP2MasterTables.sql**' script.

Question: If I am installing this newer version, do I need to uninstall my current Sip2 Manager and Service?

Yes. If you are re-installing this newer version, uninstall your current version of SIP2 Manager and Service.

Question: Will I have to start over and set up all my listeners and devices, if I install this new version of SIP2 manager and Service?

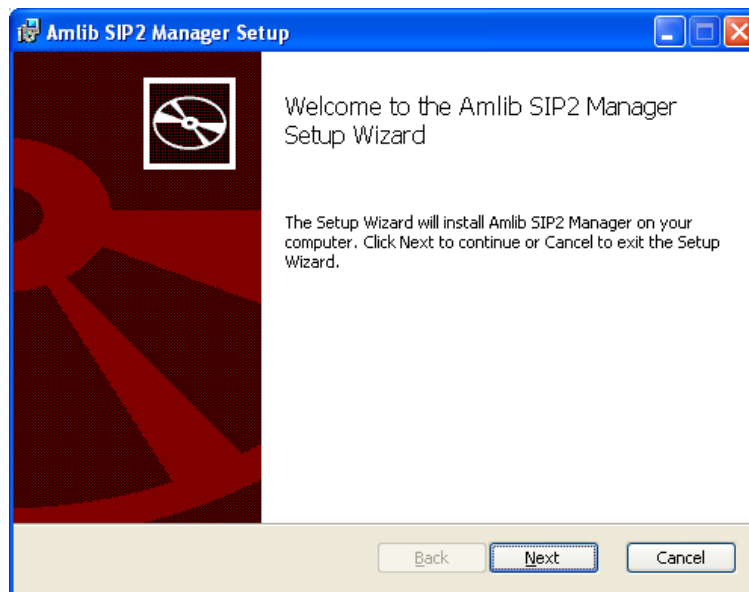
No. All your listeners and setup will remain un-changed. All you will need to do is to use the configuration manager to re-connect service to your database as part of the install process.

INSTALL THE AMLIB SIP2 MANAGER

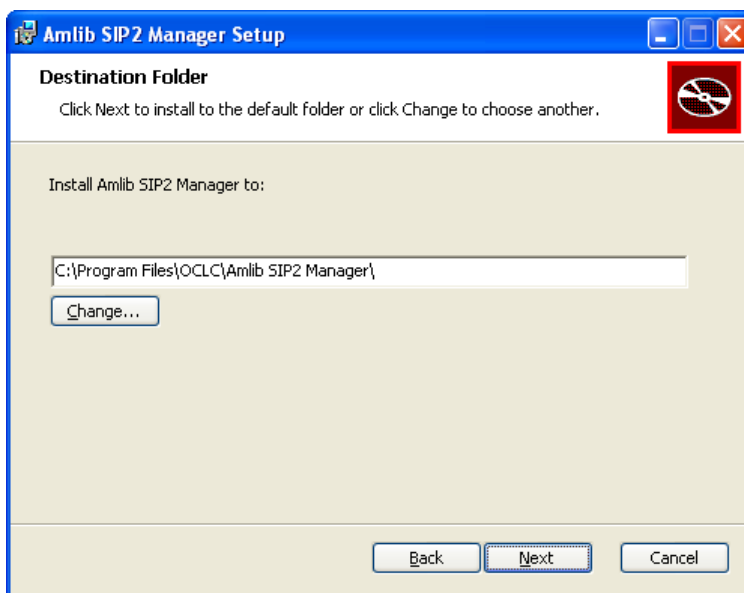
The *Amlib SIP2 Manager* can be installed on either the *Amlib* server and/or a local PC.

Step 1: Install Amlib SIP2 Manager Application

1. The [Amlib SIP2 Manager installer](#) is available on the OCLC Website, under [Downloads-Software-Updates > Version6-1 > Setup-programs Tab](#)
(Please contact Amlib Support if you do not have a login to this website)
2. Save the **AmlibSIP2Manager.msi** on your *Amlib* server
3. Double-click the **AmlibSIP2Manager.msi** to launch the Setup Wizard – the [Amlib SIP2 Manager](#) screen will open displaying the **Welcome** message:



4. Click the **Next** button – the Destination Folder screen will be displayed:



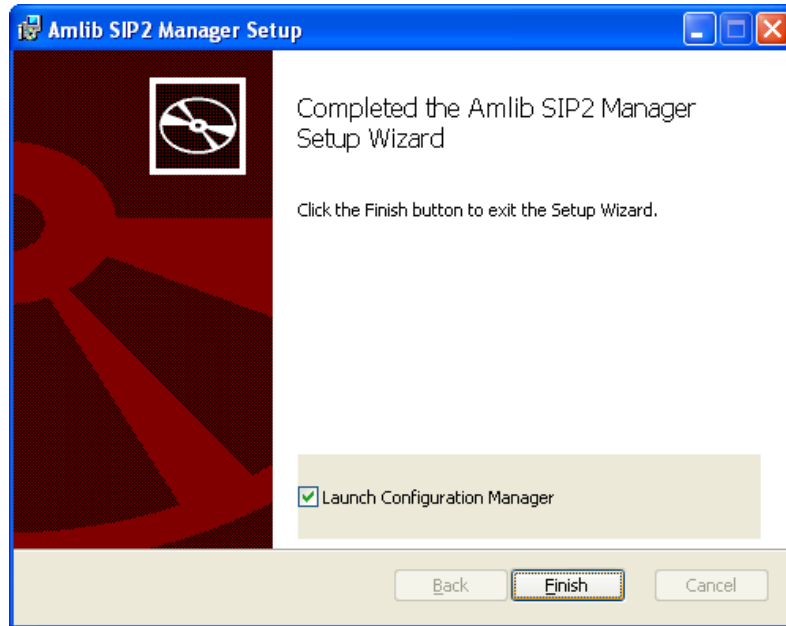
The Setup Wizard will search for the existing drive where the *Amlib* client is currently installed.

If the folder displayed IS NOT correct then click the **Change...** button to manually setup the location of the *Amlib SIP2 Manager* folder

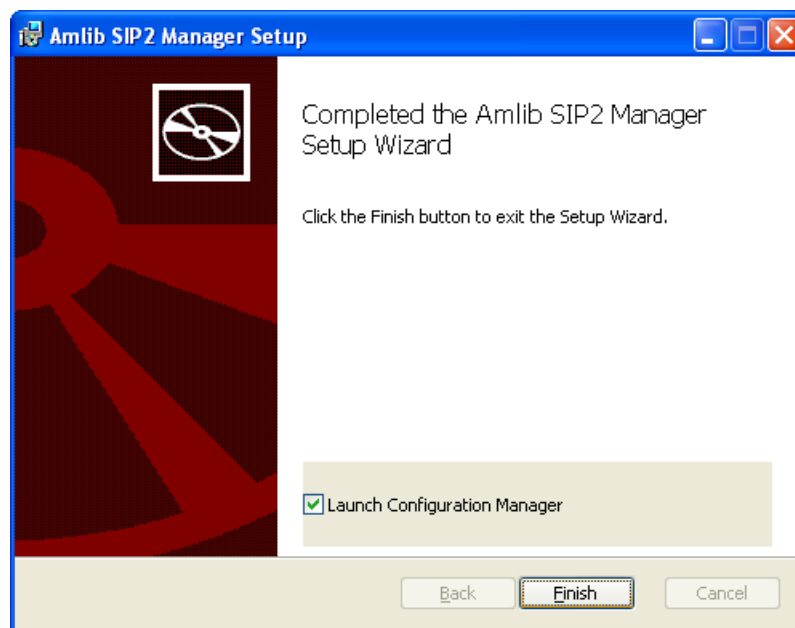
5. Click the **Next** button – the installation wizard is now ready to install the *SIP2 Manager*



6. Click the **Install** button to begin the installation – the Setup Wizard will now begin installing the *SIP2 Manager* (and the *Amlib Configuration Manager*)



7. When the installation has been completed, the following message will be displayed:
- Completed the Amlib SIP2 Manager Setup Wizard**



8. Ensure the Launch Configuration Manager box is **ticked**
9. Click the **Finish** button

The Setup Wizard will close (and the *Amlib Configuration Manager* will be automatically launched).

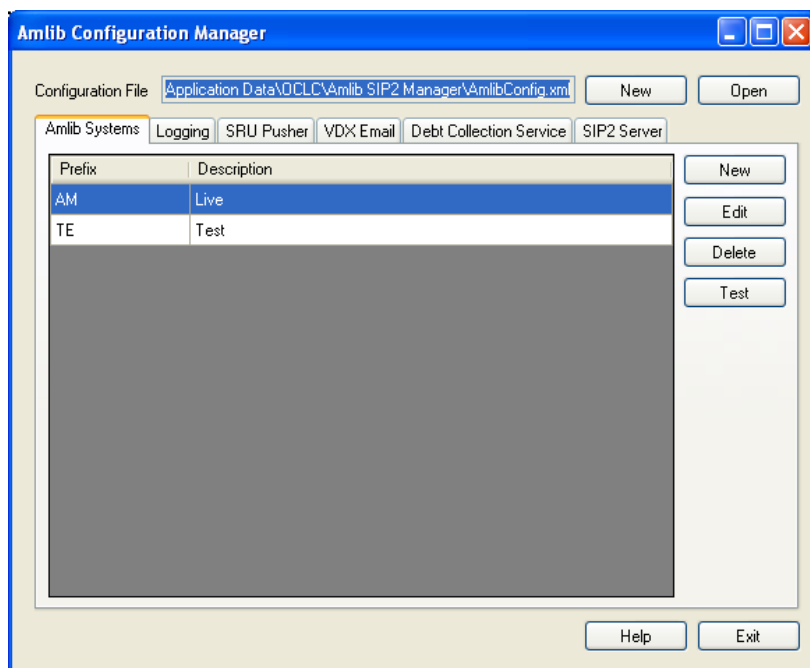
Step 2: Configure the Amlib Configuration Manager

The *Amlib Configuration Manager* eliminates the need for separate **Amlib.ini** and **SQL.ini** files to connect the *SIP2 Manager* to the *Amlib* SQL databases.

Please Note: Due to the additional extra security measures on *Windows Server 2008*, *Windows 7* and *Vista*, you may need to edit the installation's access control list settings before being able to edit the **AmlibConfig.xml** file.

Set Up Database Configuration

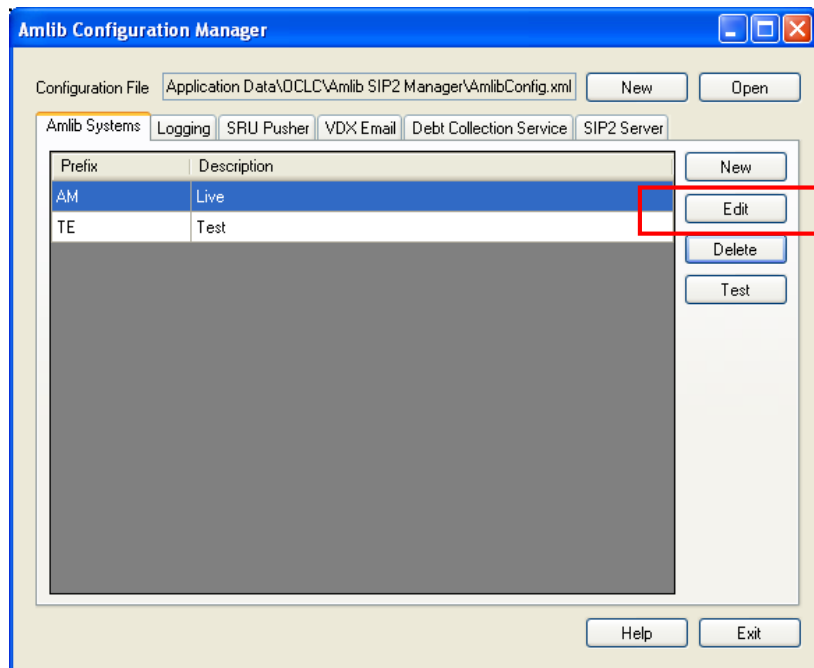
1. **Launch** the *Amlib Configuration Manager*



2. If there is no Configuration File open, click on the **Open** button and locate the *SIP2 Manager* **AmlibConfig.xml** file – it should be located in the same folder as your *Amlib SIP2 Manager* logging files (for example: **C:\ProgramData\OCLC\Amlib SIP2 Manager**)
 - *Amlib SIP2 Manager* users should access the **AmlibConfig.xml** in the **Amlib SIP2 Manager** folder
3. Once opened, the **AM** and **TE** databases will display as default
 - **Please Note:** This configuration automatically has the **AM** (Live) and **TE** (Test) databases defined (but not set)

Amlib SIP2 Manager and Service Installation Guide

4. In the Amlib Systems tab, highlight the **Live** or **Test** database connector and click the **Edit** button – the System Editor will open



5. If your database prefix is not '**AM**' add a new connector by selecting the **New** button. On the General tab, enter the **Prefix** and a **Description** , otherwise continue with **step 6**



6. On the Databases tab, enter the following details:

- Choose the details for the **RDBMS** and **OleDbProvider** from the drop-down boxes



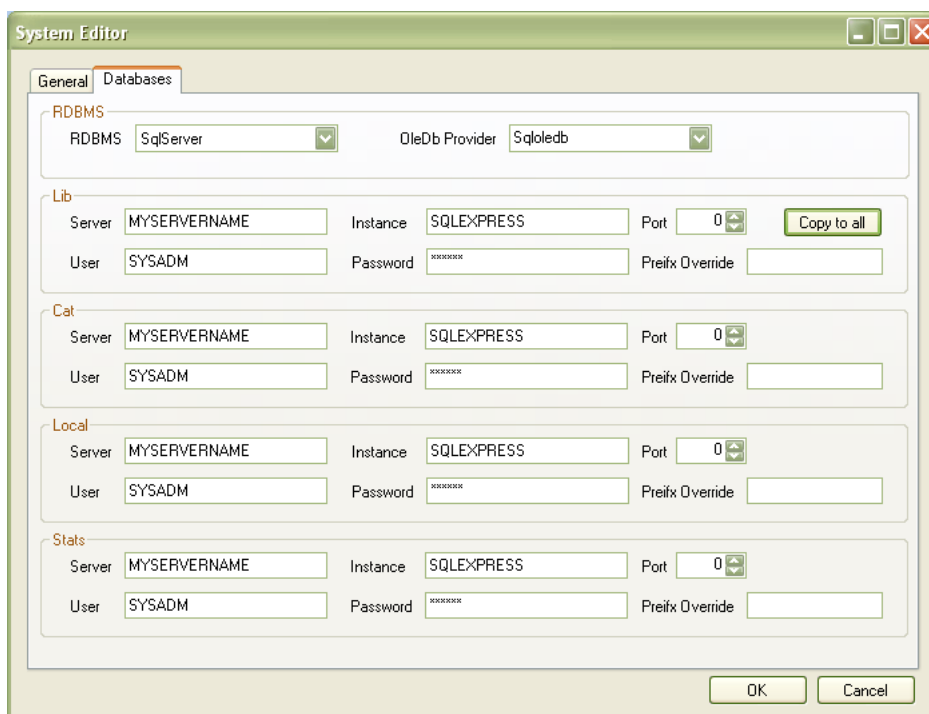
- Enter the details for the Lib database



- Server – enter the name of the **Server** running your *Amlib* databases

Amlib SIP2 Manager and Service Installation Guide

- Instance – enter an **Instance** (only if required – otherwise leave as **Default**)
 - Port – enter a **Port number** (if required – otherwise leave as **0** [for unused])
 - User – enter the **Username** for the database connection
 - Password – enter the **Password** for the database connection – the username and password should be the same as that the login for your other *Amlib* databases. **SYSADM/SYSADM** is the default login for most *Amlib* database setups.
- Click the **Copy to all** button to copy the details to the other database fields

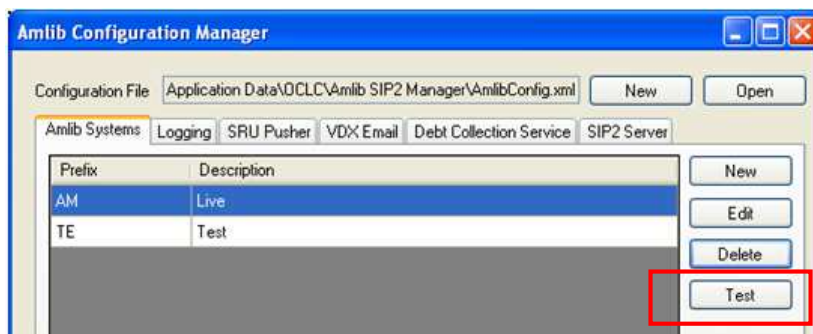


7. Click the **OK** button once complete – the System Editor window will close

Testing

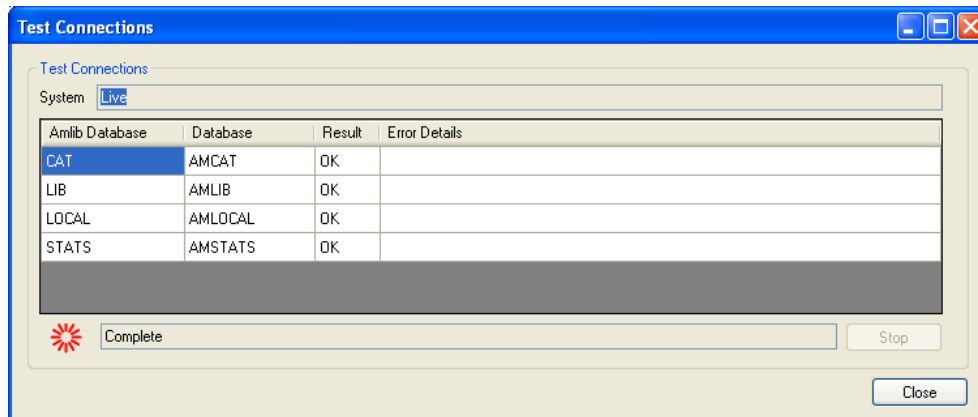
Once complete, the connection can be tested:

1. Highlight the relevant database – for example: **AM** – and click the **Test** button

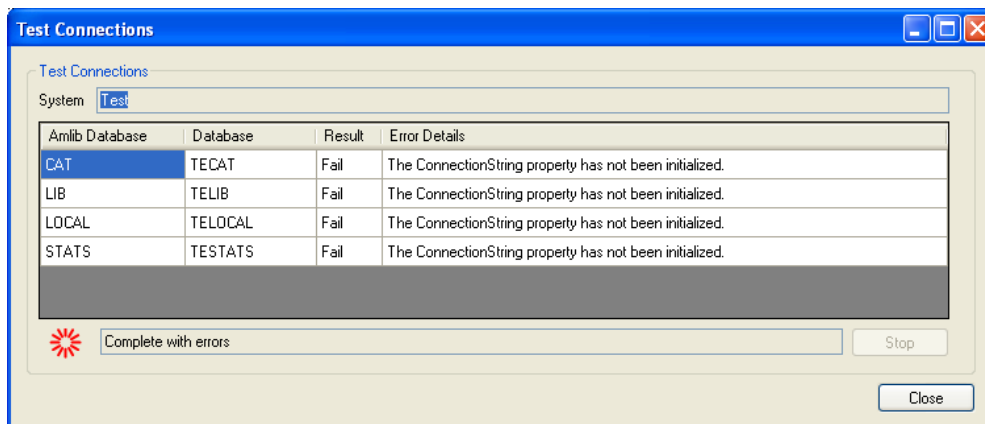


2. The Test Connections window will display with the result – if errors occur, the reason will display in the Error Details column:

- a. Test **successful** – all Results = **OK**:



- Test **unsuccessful** – all Results = **Fail** with Error Details shown:



3. Click the **Close** button to close the Test Connections screen
4. Click the **Exit** button when complete

The *Amlib SIP2 Manager* has now been installed and its connection to the *Amlib* SQL databases configured.

INSTALL THE SIP2 SERVER SERVICE

The *Amlib SIP2 Server* can be set up to run as a service. The service should be installed on a *Windows Server* operating system that has access to the server containing your *Amlib* databases.

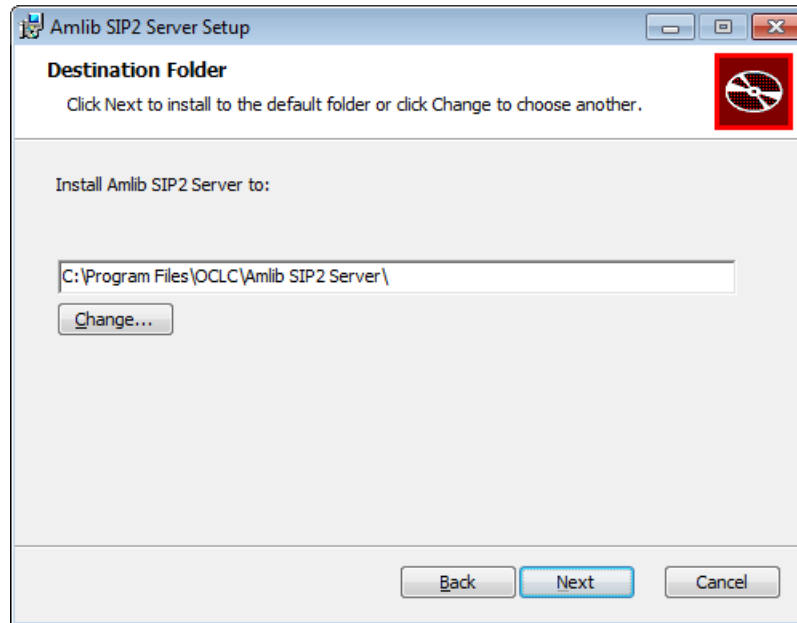
Step 1: Install Amlib SIP2 Service

1. [The Amlib SIP2 Service installer](#) is available for use on the OCLC Website, under [Downloads-Software-Updates < Version6-1 > setup-programs tab](#)

(Please contact Amlib Support if you do not have a login to this website).
2. Download the **AmlibSIP2Service.msi** and save it on your *Amlib* server
3. Double-click the **AmlibSIP2Service.msi** to launch the Setup Wizard – the [Amlib SIP2 Manager](#) screen will open displaying the **Welcome** message:



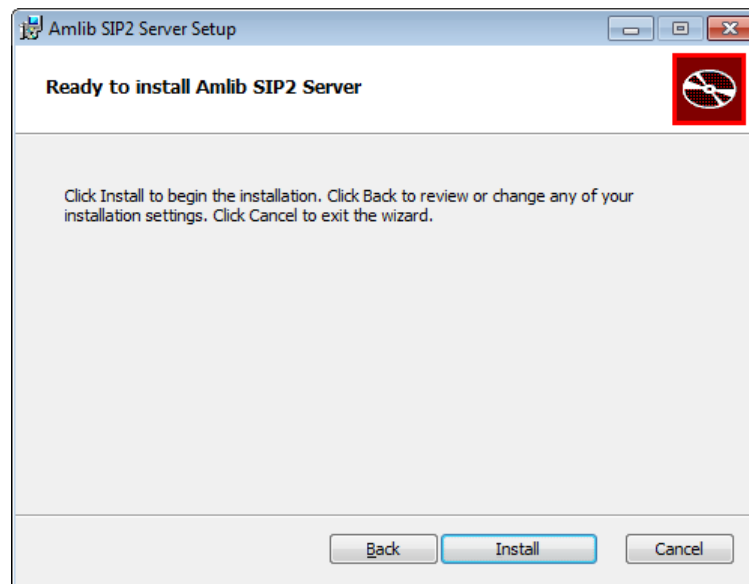
4. Click the **Next** button – the [Destination Folder](#) screen will be displayed



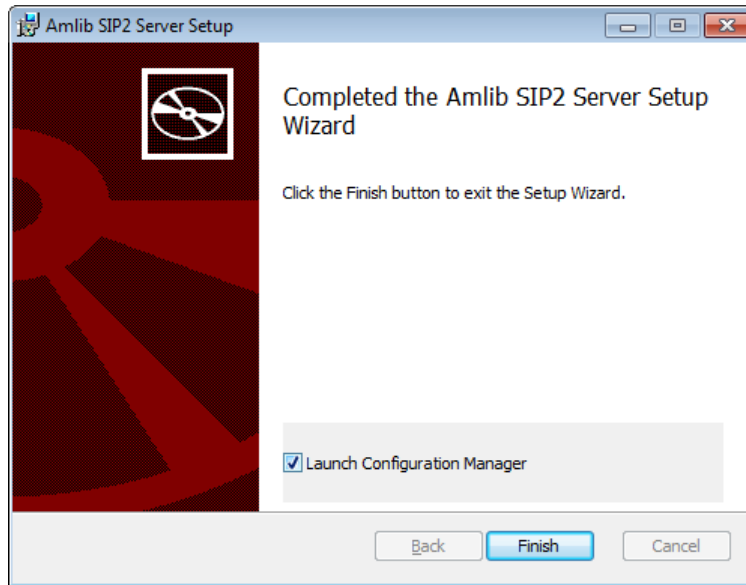
The Setup Wizard will search for the existing drive where the *Amlib* client is currently installed.

If the folder displayed IS NOT correct then click the **Change...** button to manually setup the location of the *Amlib SIP2 Manager Server* folder

5. Click the **Next** button – the installation wizard is now ready to install the *SIP2 Server*



6. Click the **Install** button to begin the installation – the Setup Wizard will now begin installing the *SIP2 Server* (and the *Amlib Configuration Manager*)
7. When the installation has been completed, the following message will be displayed:
Completed the Amlib SIP2 Manager Service Setup Wizard



8. Ensure the Launch Configuration Manager box is **ticked**
9. Click the **Finish** button

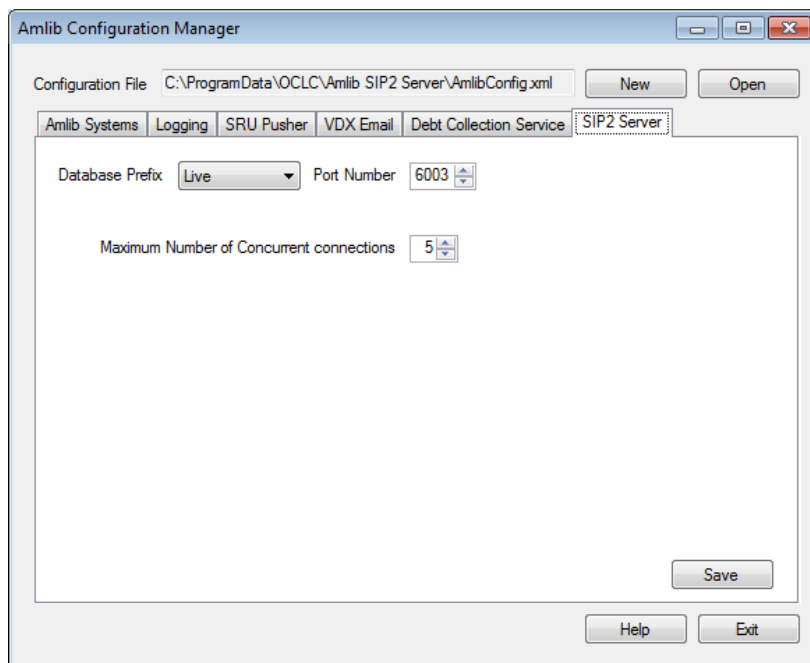
The Setup Wizard will **close** (and the *Amlib Configuration Manager* will be automatically launched).

Step 3: Configure the SIP2 Server Tab

Please Note: This tab should only be configured by users running the *Amlib SIP2 Server*. It allows the user to set the *Amlib SQL* database to be used by the *Amlib SIP2 Manager Service*.

Users who have installed the *Amlib SIP2 Manager* ONLY **do not** have to change any settings on this tab.

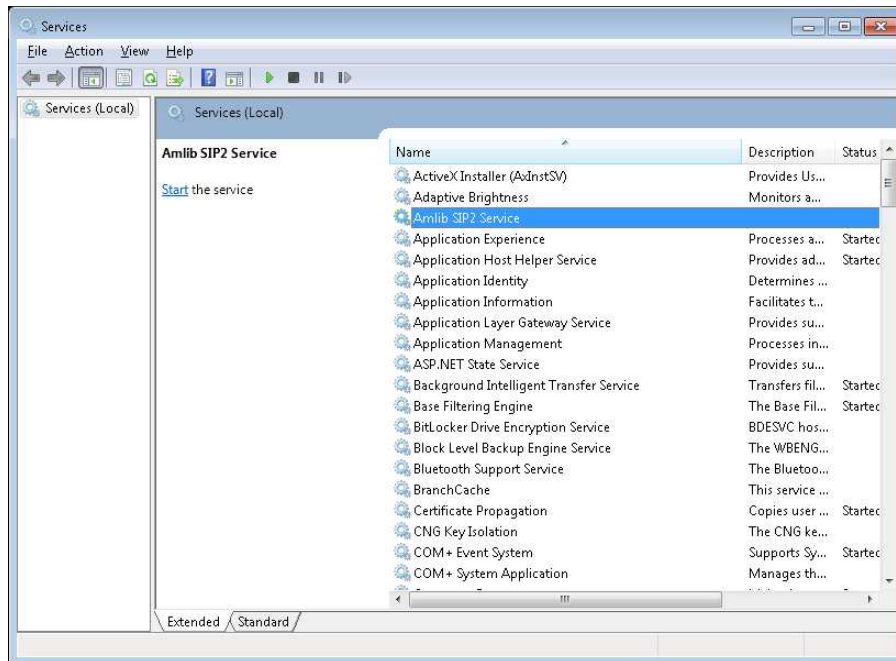
1. Select the SIP2 Server tab



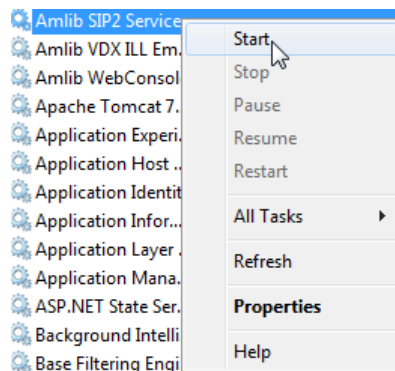
2. Select the Database Prefix: **Live** or **Test** (select **Live** when the service is ready for full implementation) - if you have set up additional database connectors, they too can be selected
3. Enter the **Port Number** that the service is going to listen to. Generally low number ports are used as they are out of the range of defined ports, so 6000-6009 for example
4. Set the **Maximum Number of Concurrent connections**. A guide for setting this would be the number of SIP2 devices you have, plus a few extra if you have eBooks or systems that are accessed concurrently by several connections
5. Click the **Save** button to save the settings
6. Click the **Exit** button when complete
7. The *Amlib SIP2 Server* settings are now complete

Step 4: Start the SIP2 Service

1. Go to **Start > Administrative Tools > Services**



2. **Right click** on the **Amlib SIP2 Service** and select **Start**



3. The service should now be running and ready for configuration with the *Amlib SIP2 Manager*
4. Please see [the Amlib SIP 2 Manager Getting Stated Guide](#) after installing both the SIP2 Manager and SIP2 service on the OCLC Website, under From [Documentation > How-to-guides > Sip2 Manager and Service](#)