

# **Amlib Client 6.3 Upgrade Guide**

**- For SQL Server & Oracle  
Version 6.3**

**Last Updated: 19 May 2017**

---

# Amlib Client 6.3 Upgrade Guide

---

© 2017 OCLC (UK) Ltd

ALL RIGHTS RESERVED. Permission is granted to electronically copy and to print in hard copy portions of this document for training purposes by licensed users of the Amlib Library Management System. Any other uses – including reproduction for purposes other than those noted above, modification, distribution, republication, transmission, re-transmission, modification, or public showing – without the prior written permission of *OCLC (UK) Ltd* – is strictly prohibited.

## Support:

Australia: 1300 260 795 (Local call cost in Australia)

### Email:

[support-amlib@oclc.org](mailto:support-amlib@oclc.org)

### Amlib Help Desk (TOPDesk):

<https://oclc.topdesk.net/tas/public/login/form>

### OCLC Amlib Support Documentation:

<https://www.oclc.org/support/services/amlib.en.html>

## Sales:

Australia: 1300 260 795 (Local call cost in Australia)

Fax: +61 (0) 3 9929 0801

Email: [sales-amlib@oclc.org](mailto:sales-amlib@oclc.org)

[www.oclc.org/en-AU/](http://www.oclc.org/en-AU/)

# Amlib Client 6.3 Upgrade Guide

---

## Contents

WELCOME .....	4
OVERVIEW .....	4
BEFORE YOU BEGIN THE INSTALLATION .....	4
Read the Installation Notes First .....	4
Option to Install to Test Database First.....	4
Customised Report Templates .....	5
Serial Numbers Required for Installation of Amlib Modules .....	5
SECTION 1: UPGRADE AMLIB SERVER AND DATABASE.....	6
Step 1: Log All Users out of Amlib .....	6
Step 2: Install the Amlib Client 6.3 Upgrade .....	6
Step 3: Run the Amlib 6.3 Changes Script using the Amlib Upgrade Utility .....	9
For SQL Server Sites.....	9
SCRIPT 1: Run the Amlib 6.3 Changes Script .....	9
For Oracle Sites Only: .....	12
SCRIPT 1: Oracle Users: Run the Amlib 6.2 Upgrade Script .....	12
SCRIPT 2: Oracle Users: Run the Amlib 6.3 Changes Script.....	14
SCRIPT 3: Oracle Users (Only) : Run the Amlib_6.3_Changes_only_Oracle.sql .....	15
SECTION 2: UPDATE ALL PCS – only for sites with Amlib installation on local PCs .....	16
Install Amlib Client 6.3 Upgrade.....	16
SECTION 3: ADVISE OCLC (UK) LTD OF further issues .....	16
Frequently Asked Questions .....	17
APPENDIX 1: AMLIB SUPPORTED OPERATING SYSTEMS & SYSTEM REQUIREMENTS .....	19
Database Server .....	19
NetOpacs (Web Opac) Application Web Server.....	19
APPENDIX 2: SILENT MODE COMMAND LINE PARAMETERS .....	20

# Amlib Client 6.3 Upgrade Guide

---

## WELCOME

---

Welcome to the *Amlib Client 6.3 Upgrade* Installation Guide.

**Please Note:** Your system must be on the latest version 6.2 before completing this upgrade.

This is a major release containing updated modules, new reports and various database changes. The complete installation time will vary according to the database size of the library but the process time is estimated at less than one (1) hour to complete.

Please refer to the Version 6.3 [Release Notes here](#) for a comprehensive list of the new features and changes in the *Amlib 6.3* client and other products.

If you still use Gupta (Centura) SQLBase with Amlib - please contact *Amlib Support as SQLBase is no longer supported. Most sites use SQLServer now!*

## OVERVIEW

---

The upgrade of the *Amlib* client involves the following steps:

1. Upgrade of the *Amlib* client application to *Amlib Client 6.3*
2. For SQL Server sites - the execution of the *Amlib 6.3 Changes Script* via Upgrade.exe facility to reconfigure the *Amlib* SQL databases
3. For Oracle sites (only) it will be necessary to run 3 Scripts
  - a. Amlib 6.2 Changes Script via Upgrade.exe facility
  - b. Amlib 6.3 Changes Script via Upgrade.exe facility
  - c. Amlib 6.3\_Changes\_Only\_Oracle via SQL Plus for Oracle

## BEFORE YOU BEGIN THE INSTALLATION

---

### Read the Installation Notes First

Please carefully read the entire installation guide prior to commencing the actual *Amlib* release update.

If you have any questions please log a support request using TOPdesk at <https://oclc.topdesk.net/tas/public/login/form> . If you do not know your TOPdesk login please email [support-anz@oclc.org](mailto:support-anz@oclc.org) and we will send it to you.

Follow the instructions precisely and do not run any scripts against the database more than once. If you have any difficulties, please call *OCLC (UK) Ltd* immediately.

### Option to Install to Test Database First

If you would like to only install this release in your test *Amlib* database, please log a support request on TOPdesk before proceeding.

## Customised Report Templates

### **WARNING!**

Sites that have *customised* any report templates MUST ensure that the customised templates have been saved with a new name (with backup copies saved elsewhere).

- The report templates are located in the **Reports** folder on your *Amlib* server – for example: **C:/Amlib/Reports**

If you have not renamed your templates after making changes, they will be *overwritten* during the upgrade as the incoming template file names will match on the existing template file names.

During the upgrade all report templates will also be copied to **C:/Amlib/Previous/Reports** so you may find the last version of your report templates there after the upgrade

## Serial Numbers Required for Installation of Amlib Modules

The *Amlib Client 6.3 Upgrade* requires a serial number. Before commencing the upgrade, you must log a support call on TOPdesk requesting your serial keys for the upgrade at <https://oclc.topdesk.net/tas/public/login/form>. If you do not know your TOPdesk login please email [support-anz@oclc.org](mailto:support-anz@oclc.org) and we will send it to you.

When logging a support call for the serial keys please advise us what your current version of Amlib is.

# Amlib Client 6.3 Upgrade Guide

---

## SECTION 1: UPGRADE AMLIB SERVER AND DATABASE

---

The *Amlib Client 6.3* needs to be installed on the *Amlib* server. However IF the *Amlib* client installed locally, each PC will also need to be upgraded.

**Please Note:** This process should take less than an hour depending on the size of your database and server configuration. (If you are reading this document for the first time and have not yet started the *Amlib Client 6.3 Upgrade* you can copy your **Live** database to your **Test** database, and run the script on the **Test** database first to ascertain how long it will take)

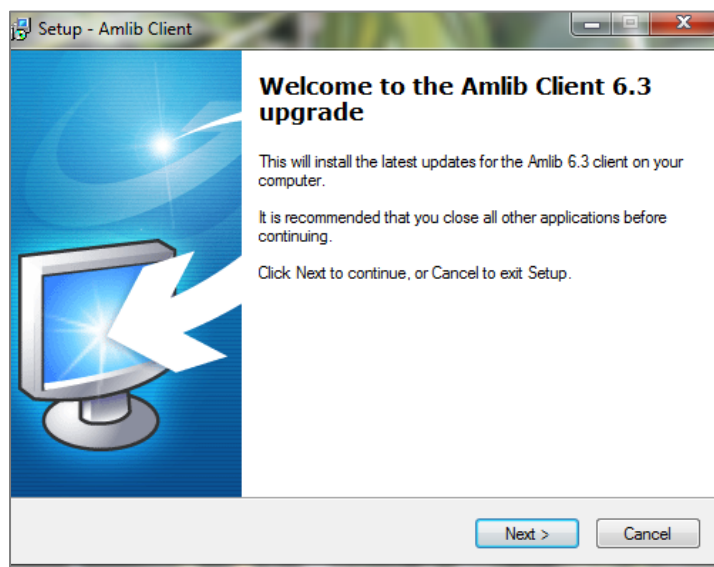
### Step 1: Log All Users out of Amlib

- Ensure all users have logged out of the *Amlib* client
- *OCLC (UK) Limited* recommends that the library verify that it has an up-to-date **backup** of its database (for example: from the previous night) before installing any updates

### Step 2: Install the Amlib Client 6.3 Upgrade

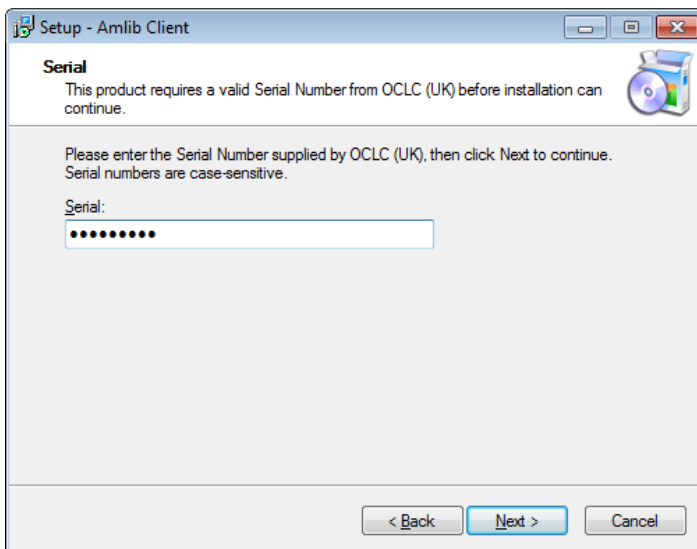
**IMPORTANT:** Please ensure that you have **full read/write** access to the **\Amlib** folder on your server (for example: **C:\Amlib**) and that you are logged in with Administrative Privileges.

1. The [Amlib Client 6.3 upgrade installer](#) is available on the OCLC Website, under Downloads and Software Updates>Version 6.3>Update and Patches>Amlib Client: (contact *Amlib* support if you require a login to this website)
2. Download the **Amlib63Upgrade.exe** and save it on your *Amlib* server
3. Double-Select the **Amlib63Upgrade.exe** to launch the installation Wizard – the Setup – Amlib Client screen will open displaying the **Welcome** message:

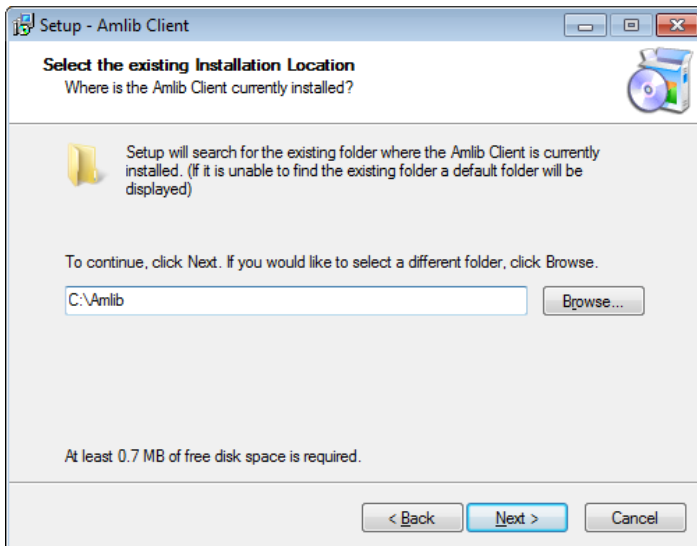


# Amlib Client 6.3 Upgrade Guide

4. Select the **Next** button – the Serial screen will display, prompting you for valid Serial Number:



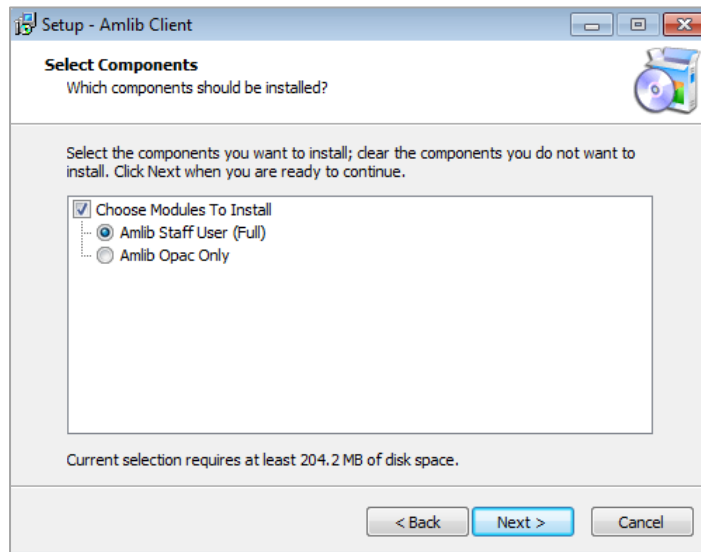
5. Enter the **Serial Key** supplied by *OCLC (UK) Ltd* (case sensitive!) then
6. Select the **Next** button – the Installation Location screen will be displayed
7. Setup will search for the existing folder where the *Amlib Client* is currently installed (if it is unable to find the existing folder a default folder will display)



8. If the folder displayed IS NOT correct then Select the **Browse** button to manually locate the location of the existing **Amlib** folder

# Amlib Client 6.3 Upgrade Guide

9. Select the **Next** button – the Select Components window will display:

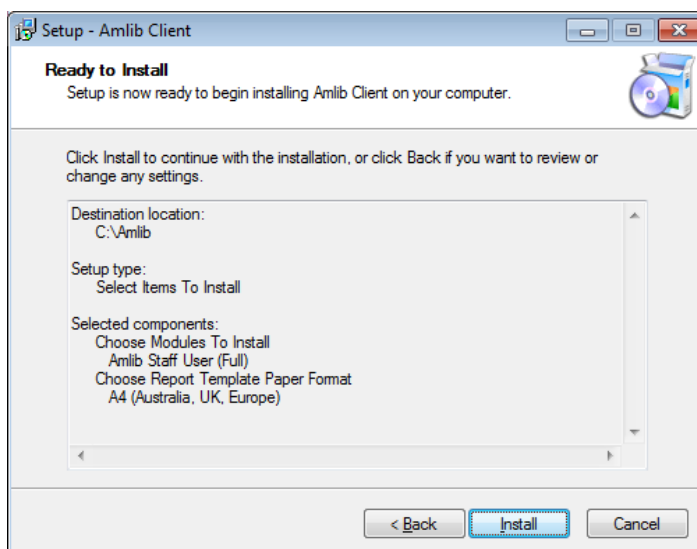


10. Choose which components should be installed:

d. Modules to Install:

- **Amlib Staff User (Full)** – upgrades *Amlib* Staff Client (catalogue, circulation, etc.)
- **Amlib Opac Only** – only upgrades the Amlib Client Server OPAC module (*only select this option if you are installing on a Public Access workstation*)

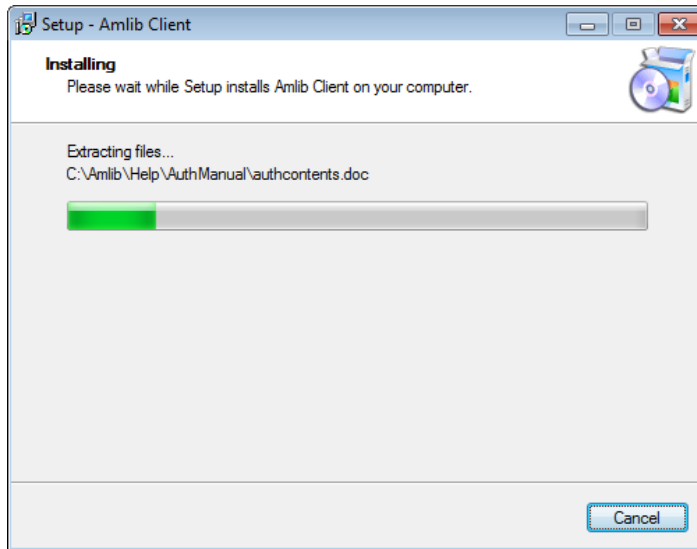
11. Select options and Select the **Next** button – the Ready to Install screen will display with a summary of the installation tasks to be performed:



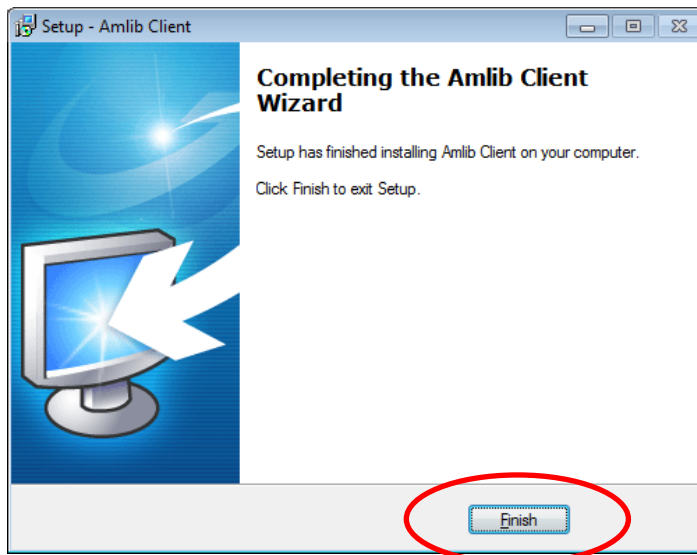
12. Select the **Install** button – the Installing screen will display:



# Amlib Client 6.3 Upgrade Guide



13. When complete Select the **Finish** button



14. The setup Wizard will close

## Step 3: Run the Amlib 6.3 Changes Script using the Amlib Upgrade Utility

**For SQL Server Sites** – there is only 1 Script to run

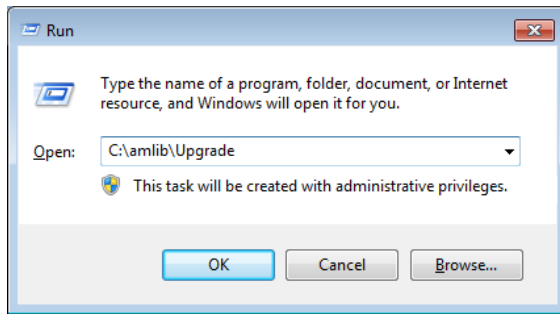
SCRIPT 1: Run the Amlib 6.3 Changes Script

After successfully installing the *Amlib Client 6.3* software on the server, you will need to run the **Upgrade.exe** utility to update your *Amlib* SQL databases with the new tables and columns for this release.

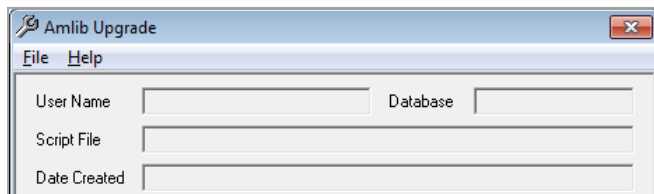
***WARNING! Do not run any of these Upgrade Scripts on the same database more than once. If you have any difficulties, please ring OCLC (UK) Limited immediately.***

## Amlib Client 6.3 Upgrade Guide

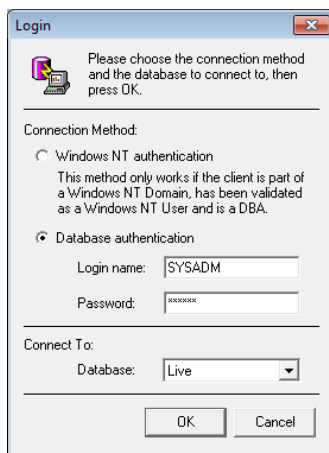
1. To start the *Amlib Upgrade* utility, select on the Windows **Start** menu and select **Run** – the Run dialog window will display:



2. In the Open: field type in: **c:\amlib\upgrade** and Select the **OK** button (replace **c:\amlib** with the correct path of your *Amlib Client* folder if different)
3. The Amlib Upgrade screen will display:



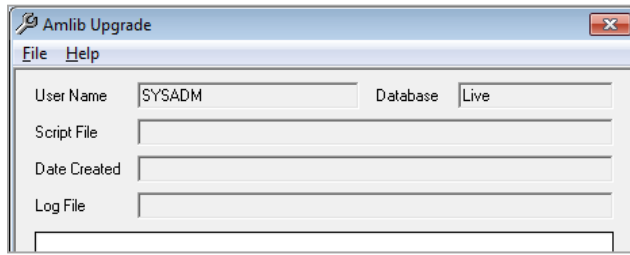
4. From the menu, select **File > Login...** - the Login dialog box will display:



5. Ensure the **Database authentication** option is selected
6. Enter the following:
  - a. Login name: **SYSADM**
  - b. Password: **SYSADM**
  - c. Select the Database: to update (default is the **Live** database)

**Please Note:** The login is case-sensitive. If typed in lowercase, it will appear as uppercase, but you **MUST** type it in uppercase.

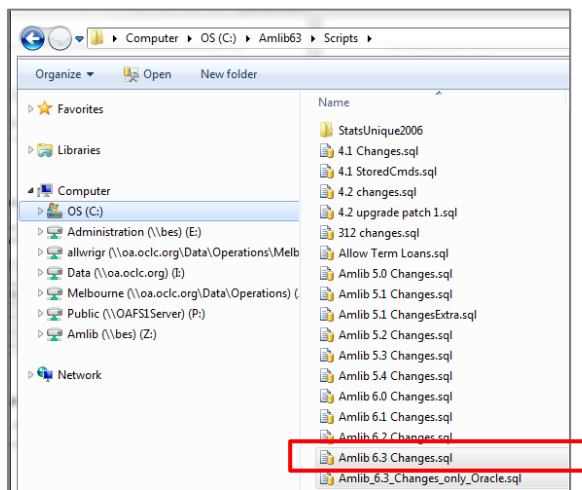
# Amlib Client 6.3 Upgrade Guide



7. Select the **OK** button

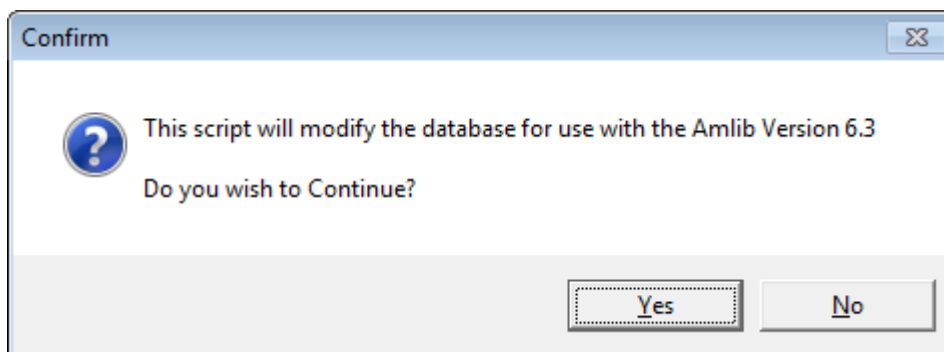
The Amlib Upgrade utility should now be logged into your SQL database.

8. From the menu, select **File > Open...** - the Open dialog box will display:



**IMPORTANT NOTE FOR USERS UPGRADING FROM AMLIB 5.2 or 5.3, 5.4, 6.0, 6.1, 6.2**  
You **MUST** upgrade to version 6.2 before upgrading to 6.3. Please follow the relevant upgrade guides that can be found on the content portal.

9. In the **Scripts** subfolder for SQL databases (for example: **C:\Amlib\Scripts**), select the **Amlib 6.3 Changes.sql** file and Select on the **Open** button only.
10. A prompt will display with the following message: **This script will modify the database for use with the Amlib Version 6.3. Do you wish to Continue?**



11. Select the **Yes** button (select **No** if the SQL script has previously been run on this database and you have selected to run this script by mistake)

## Amlib Client 6.3 Upgrade Guide

---

12. The system will immediately start updating the database for the *Amlib 6.3* system changes
13. On successful completion of the upgrade script a prompt will display with the following message: **The Amlib 6.3 upgrade script is complete. Please check the file 'upgrade.log' for any errors.**
14. Select the **OK** button
15. To exit the *Amlib Upgrade* utility, from the menu select **File > Exit**

### For Oracle Sites Only:

**It is essential that the Amlib 6.2 upgrade scripts are run prior to running the Amlib 6.3 Scripts:**

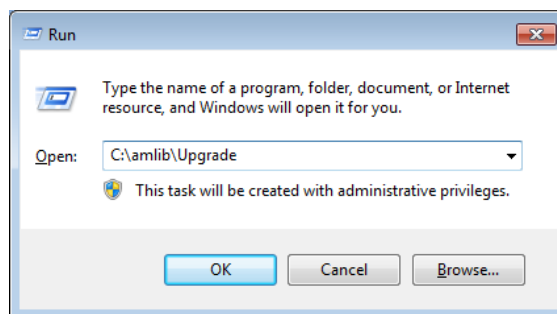
After successfully installing the *Amlib Client 6.3* software on the server, you will need to run the **Upgrade.exe** utility to update your *Amlib* SQL databases with the new tables and columns for this release.

*WARNING! Do not run any of these Upgrade Scripts on the same database more than once. If you have any difficulties, please ring OCLC (UK) Limited immediately.*

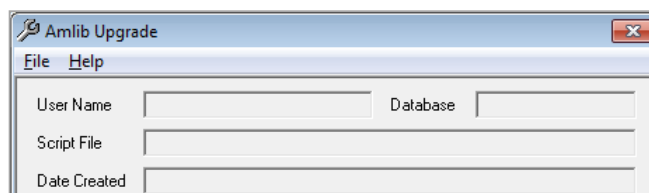
#### SCRIPT 1: Oracle Users: Run the Amlib 6.2 Upgrade Script

In Oracle, it was not previously possible to go to Version 6.2, so this script will do be run prior to running the Version 6.3 scripts

1. To start the *Amlib Upgrade* utility, select on the Windows **Start** menu and select **Run** – the Run dialog window will display:

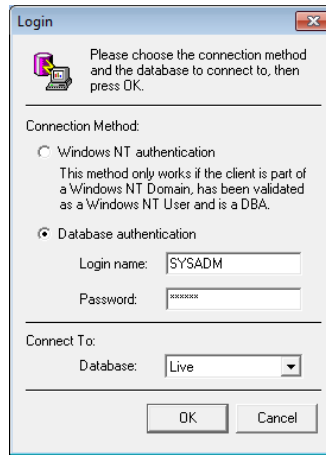


2. In the Open: field type in: **c:\amlib\upgrade** and Select the **OK** button (replace **c:\amlib** with the correct path of your *Amlib Client* folder if different)
3. The Amlib Upgrade screen will display:



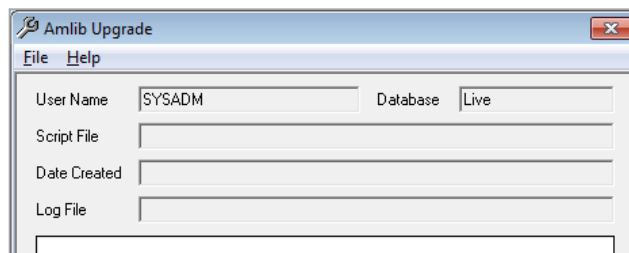
4. From the menu, select **File > Login...** - the Login dialog box will display:

# Amlib Client 6.3 Upgrade Guide



5. Ensure the **Database authentication** option is selected
6. Enter the following:
  - a. Login name: **SYSADM**
  - b. Password: **SYSADM**
  - c. Select the Database: to update (default is the **Live** database)

**Please Note:** The login is case-sensitive. If typed in lowercase, it will appear as uppercase, but you **MUST** type it in uppercase.



7. Select the **OK** button

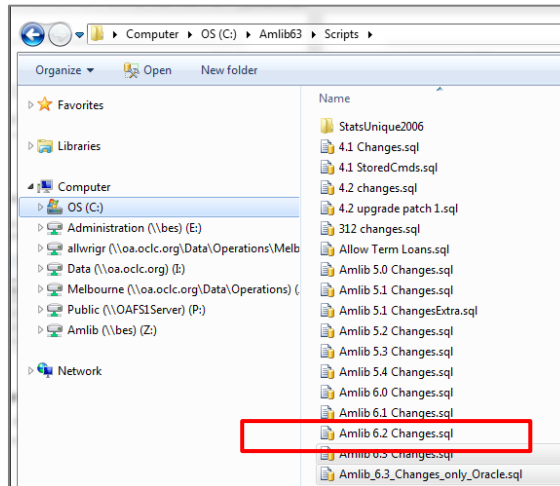
The Amlib Upgrade utility should now be logged into your SQL database.

**IMPORTANT NOTE FOR USERS UPGRADING FROM AMLIB 5.2 or 5.3, 5.4, 6.0**

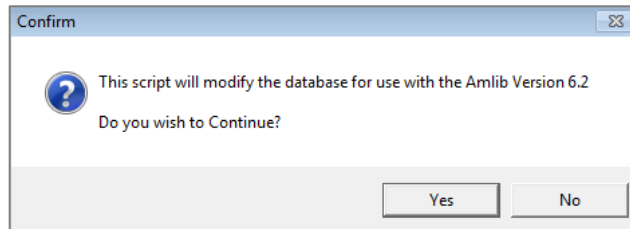
You **MUST** upgrade to version 6.1 before upgrading to 6.2. Please follow the relevant upgrade guides that can be found on the content portal.

8. In the **Scripts** subfolder for databases (for example: **C:\Amlib\Scripts**), select the **Amlib 6.2 Changes.sql** file and Select on the **Open** button only.

# Amlib Client 6.3 Upgrade Guide



9. A prompt will display with the following message: **This script will modify the database for use with the Amlib Version 6.2. Do you wish to Continue?**

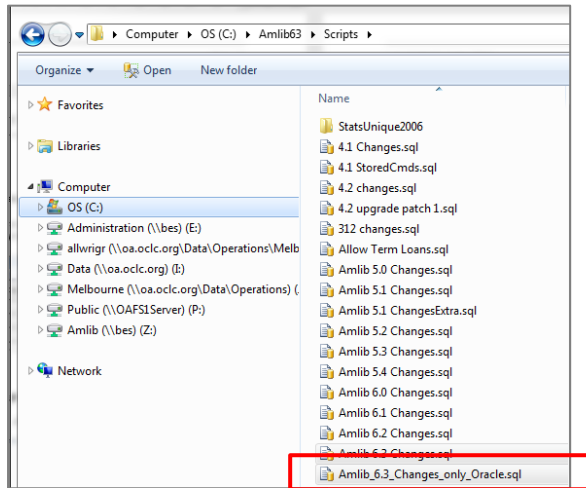


10. Select the **Yes** button (select **No** if the SQL script has previously been run on this database and you have selected to run this script by mistake)
11. The system will immediately start updating the database for the *Amlib 6.2* system changes
12. On successful completion of the upgrade script a prompt will display with the following message: **The Amlib 6.3 upgrade script is complete. Please check the file 'upgrade.log' for any errors.**
13. Select the **OK** button

## SCRIPT 2: Oracle Users: Run the Amlib 6.3 Changes Script

1. From the Upgrade Facility menu, select **File > Open...** - the Open dialog box will display:

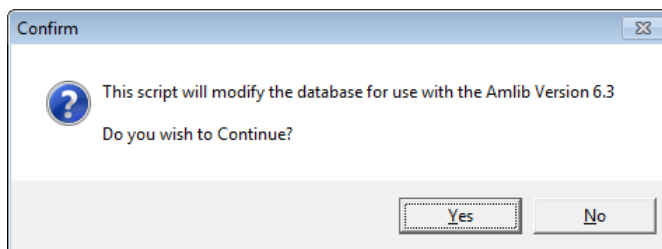
# Amlib Client 6.3 Upgrade Guide



## **IMPORTANT NOTE FOR USERS UPGRADING FROM AMLIB 5.2 or 5.3, 5.4, 6.0, 6.1, 6.2**

You **MUST** upgrade to version 6.2 before upgrading to 6.3. Please follow the relevant upgrade guides that can be found on the content portal.

2. In the **Scripts** subfolder for SQL databases (for example: **C:\Amlib\Scripts**), select the **Amlib 6.3 Changes.sql** file and Select on the **Open** button only.
3. A prompt will display with the following message: **This script will modify the database for use with the Amlib Version 6.3. Do you wish to Continue?**



4. Select the **Yes** button (select **No** if the SQL script has previously been run on this database and you have selected to run this script by mistake)
5. The system will immediately start updating the database for the *Amlib 6.3* system changes
6. On successful completion of the upgrade script a prompt will display with the following message: **The Amlib 6.3 upgrade script is complete. Please check the file 'upgrade.log' for any errors.**
7. Select the **OK** button

**SCRIPT 3: Oracle Users (Only): Run the Amlib\_6.3\_Changes\_only\_Oracle.sql – DO NOT run this script using the Upgrade facility but instead run in from SQL Plus.**

1. Run SQLPlus and login as an Amlib schema owner (i.e. SYSADM) .
2. Execute the script file Amlib\_6.3\_Changes\_only\_Oracle.sql from SQLPlus.

# Amlib Client 6.3 Upgrade Guide

---

## SECTION 2: UPDATE ALL PCS - only for sites with Amlib installation on local PCs

---

### Install Amlib Client 6.3 Upgrade

Please ensure that you have full read/write access to the **\Amlib** folder (for example: **C:\Amlib**) and that you are logged in with Administrative Privileges.

- To install the *Amlib 6.3 Client* upgrade to local machines.

#### PLEASE NOTE:

- If the *Amlib Client* software is installed on each PC: **EVERY** PC that has the *Amlib Client* software installed on it will need to have the above *Amlib Client 6 Upgrade* loaded on the local hard drive (for example: **C:\Amlib**)
- Refer to [Appendix A](#) (at the end of this document) for optional information of **Silent Mode Command Line Parameters** available for installing the *Amlib* client

## SECTION 3: ADVISE OCLC (UK) LTD OF FURTHER ISSUES

---

If you have problems upgrading to Amlib 6.3 that are not covered in this guide please send your **upgrade.log** file to *OCLC (UK) Ltd* at:

- [support-anz@oclc.org](mailto:support-anz@oclc.org)

This file will be located in the **\Amlib\Scripts** folder on the PC/server.



## Frequently Asked Questions

### Question: How much space do I need to have on my server?

- This will vary from library to library, depending on the number of bibliographic records held in the database. Generally, libraries should ensure they have at least 5 Gb free space on their database server

### Question: Do I need to have a completed backup of my system before proceeding?

- Yes. *OCLC (UK) Ltd* recommends that the library verify that it has an up-to-date backup of its database (for example: from the previous night) before installing any updates. You should also make sure that your tape backup includes a backup of your *Amlib* client folder (for example: **C:\Amlib**).
- Also, if you have customised any report templates, please ensure they have been renamed and a copy saved elsewhere. If you have not renamed your templates after making changes, they will be overwritten by the upgrade as the incoming file name will match on the existing file name.

### Question: Do I need to update each PC with the Amlib Client Upgrade?

- In addition to the database server itself, the *Amlib Client 6.3 Upgrade* needs to be installed on each PC that has the *Amlib* software loaded on the local hard disk

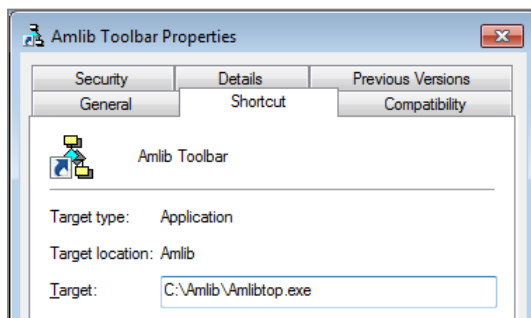
**WARNING:** Any *Amlib* database Upgrade scripts (SQL scripts using **UPGRADE.EXE**) should only be run once for the entire site.

### Question: Do all users need to be logged out of Amlib?

- Yes. All users should be completely logged out from all *Amlib* client modules when installing the new *Amlib* client release UNTIL the entire upgrade processes are completed
- Libraries using the *NetOpacs* module should ensure that this program is also shutdown

### Question: How do I know whether Amlib is loaded from my local PC?

- Right-Select on the *Amlib* icon on your desktop and select **Properties** – the Amlib Toolbar Properties window will display

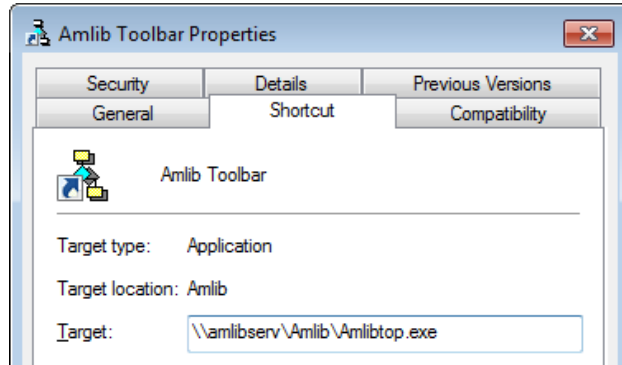


- The Target field will show you where your *Amlib* is installed:

## Amlib Client 6.3 Upgrade Guide

---

- a. If it has something like **C:\Amlib** (or **D:\Amlib**, **E:\Amlib** depending on the hard drives in your computer) then it is installed locally
  
- b. If it starts with two back slashes (\\) and then a name or IP address, it is installed on a server:



- If you are having trouble identifying where *Amlib* is installed please contact your IT Department or **Amlib Support** for assistance

### Question: Can OCLC (UK) Ltd install the upgrade for me?

- Yes. *OCLC (UK) Ltd* can arrange for the remote installation of this upgrade for a small fee

# Amlib Client 6.3 Upgrade Guide

## APPENDIX 1: AMLIB SUPPORTED OPERATING SYSTEMS & SYSTEM REQUIREMENTS

### Database Server

<b>Operating System</b>	<ul style="list-style-type: none"><li>• Windows 2003, 2008, 2012</li><li>• Linux (and Unix)</li></ul>
<b>RDBMS</b>	<ul style="list-style-type: none"><li>• Microsoft SQL Server 2005, 2008 R2, 2012</li><li>• Oracle 9i, 10g, 11gR2</li></ul>
<b>Memory (RAM)</b>	<ul style="list-style-type: none"><li>• Depends on operating system, volume &amp; RDBMS selected.</li><li>• Minimum 2GB RAM for SQL Server</li><li>• Minimum 2GB RAM for Oracle</li></ul>
<b>Hard Disk</b>	<ul style="list-style-type: none"><li>• Depends on volume. Using multiple Fast SCSI-3 Disk Drives (for example: more SCSI drives provides better performance)</li></ul>
<b>Backup</b>	<ul style="list-style-type: none"><li>• Removable backup device (for example: <b>USB External Drive</b>)</li></ul>

### NetOpacs (Web Opac) Application Web Server

<b>Operating System</b>	<ul style="list-style-type: none"><li>• Windows 2003, 2008, 2012 with IIS pre-installed</li></ul>
<b>Memory (RAM)</b>	<ul style="list-style-type: none"><li>• Depends on operating system and volume</li><li>• Minimum 2GB RAM for Windows 2003/2008/2012</li></ul>

*Although NetOpacs can operate on the same Amlib Database Server, it is recommended that medium to large libraries should implement a dedicated NetOpacs Server for maximum performance & security*

### PC Client (for Client Server Modules including Offline)

<b>Operating System</b>	<ul style="list-style-type: none"><li>• Windows XP, Vista, Windows 7, Windows 8, Windows 10</li></ul>
<b>Memory (RAM)</b>	<ul style="list-style-type: none"><li>• Minimum 1 GB for Windows XP</li><li>• Minimum 2GB for Windows Vista</li><li>• Minimum 2GB for Windows 7</li><li>• Minimum 3GB for Windows 8</li><li>• Minimum 3GB for Windows 10</li></ul>
<b>Display</b>	<ul style="list-style-type: none"><li>• SVGA (800x600) minimum</li></ul>
<b>Web Browser</b>	<ul style="list-style-type: none"><li>• Internet Explorer 9 and above (will also work with other JAVA enabled browsers)</li></ul>

- **Important Note:** the above requirements are provided as a general guideline only

# Amlib Client 6.3 Upgrade Guide

---

## APPENDIX 2: SILENT MODE COMMAND LINE PARAMETERS

---

The *Amlib Client 6.3 Upgrade* installer features the option to install with silent mode command parameters - ideal if you wish to automatically distribute to *Amlib* Staff Workstations as part of a login script.

For example:

- **Amlib63Upgrade.exe /VERYSILENT /SUPPRESSMSGBOXES /NOCANCEL /DIR="c:\amlib"**

(Installs the *Amlib Client 6.3 Upgrade* silently to the **C:\Amlib** on the workstation)

Details of available parameters are:

### **/SILENT, /VERYSILENT**

Instructs Setup to be silent or very silent. When Setup is silent the wizard and the background window are not displayed but the installation progress window is. When a setup is very silent this installation progress window is not displayed. Everything else is normal so for example error messages during installation are displayed unless disabled using /SUPPRESSMSGBOXES

If a restart is necessary and the '/NORESTART' command isn't used (see below) and Setup is silent, it will display a Reboot now? Message box. If it's very silent it will reboot without asking.

### **/SUPPRESSMSGBOXES**

Instructs Setup to suppress message boxes. Only has an effect when combined with '/SILENT' and '/VERYSILENT'.

The default response in situations where there's a choice is:

-Yes, in a 'Keep newer file?' situation.

-No in a 'File exists, confirm overwrite.' situation.

-Abort in Abort/Retry situations.

-Cancel in Retry/Cancel situations. -

-Yes (=continue) in a

DiskSpaceWarning/DirExists/DirDoesntExist/NoUninstallWarning/ExitSetupMessage/  
ConfirmUninstall

situation. -Yes (=restart) in a FinishedRestartMessage/UninstalledAndNeedsRestart situation.

5 message boxes are not suppressible:

-The About Setup message box.

-The Exit Setup? message box.

-The FileNotInDir2 message box displayed when Setup requires a new disk to be inserted and the disk was not found.

-Any (error) message box displayed before Setup (or Uninstall) could read the command line parameters.

-Any message box displayed by [Code] support function MsgBox.

# Amlib Client 6.3 Upgrade Guide

---

## **/NOCANCEL**

Prevents the user from cancelling during the installation process, by disabling the Cancel button and ignoring Selects on the close button. Useful along with '/SILENT' or '/VERYSILENT'.

## **/NORESTART**

Instructs Setup not to reboot even if it's necessary.

## **/RESTARTEXITCODE=exit code**

Specifies the custom exit code that Setup is to return when a restart is needed. Useful along with '/NORESTART'. Also see Setup Exit Codes.

## **/DIR="x:\dirname"**

Overrides the default directory name displayed on the Select Destination Location wizard page. A fully qualified pathname must be specified.

## **/PASSWORD=password**

Specifies the Password (Serial Key) to use.

When an invalid password is specified, this command line parameter is also ignored.

## **/GROUP="folder name"**

Overrides the default folder name displayed on the Select Start Menu Folder wizard page.

## **/NOICONS**

Instructs Setup to initially check they don't create any icons check box on the Select Start Menu Folder wizard page.

## **/COMPONENTS="comma separated list of component names"**

Overrides the default components settings. Using this command line parameter causes Setup to automatically select a custom type.

(You will need to contact Amlib Support for a complete list of Components that are available to choose from, depending on which Installer is being used)

## **/TASKS="comma separated list of task names"**

Specifies a list of tasks that should be initially selected or deselected. To deselect a task, prefix its name with a "!" character.

Only the specified tasks (and their children) will be selected; the rest will be deselected. Use the /MERGETASKS parameter instead if you want to keep the default set of tasks and only select/deselect some of them.

## **Examples:**

Deselect all tasks, then select the "desktopicon" and "fileassoc" tasks:

```
/TASKS="desktopicon,fileassoc"
```

Deselect all tasks, then select a parent task item, but exclude one of its children:

```
/TASKS="parent,!parent\child"
```

## Amlib Client 6.3 Upgrade Guide

---

### **/MERGETASKS="comma separated list of task names"**

Like the /TASKS parameter, except the specified tasks will be merged with the set of tasks that would have otherwise been selected by default.

If UsePreviousTasks is set to yes, the specified tasks will be selected/deselected after any previous tasks are restored.

Examples:

Keep the default set of selected tasks, but additionally select the "desktopicon" and "fileassoc" tasks:

```
/MERGETASKS="desktopicon,fileassoc"
```

Keep the default set of selected tasks, but deselect the "desktopicon" task:

```
/MERGETASKS="!desktopicon"
```

### **/LOG**

Causes Setup to create a log file in the user's TEMP directory detailing file installation and [Run] actions taken during the installation process. This can be a helpful debugging aid. For example, if you suspect a file isn't being replaced when you believe it should be (or vice versa), the log file will tell you if the file was really skipped, and why.

The log file is created with a unique name based on the current date. (It will not overwrite or append to existing files.)

The information contained in the log file is technical in nature and therefore not intended to be understandable by end users. Nor is it designed to be machine-parseable; the format of the file is subject to change without notice.

### **/LOG="filename"**

Same as /LOG, except it allows you to specify a fixed path/filename to use for the log file. If a file with the specified name already exists it will be overwritten. If the file cannot be created, Setup will abort with an error message.

### **/LOADINF="filename"**

Instructs Setup to load the settings from the specified file after having checked the command line. This file can be prepared using the '/SAVEINF=' command as explained below.

**Don't forget to use quotes if the filename contains spaces.**

**/SAVEINF="filename"** Instructs Setup to save installation settings to the specified file.