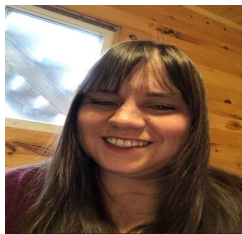


October 18, 2023

Foundations of Connexion client

Crystal Rodriguez

Member Education



Learning objectives

- OCLC at a glance
- WorldCat at a glance
- The copy cataloging workflow
- Starting Connexion client
- Working with list of records
- Online Help and Support

OCLC at a glance

Founded

1967 as a nonprofit, member-driven library community

Members

30,000 in 100+ countries

Library types served

Research, academic, public, school, medical, law, corporate, government, special, state and national libraries, groups and consortia

Major services

Library management, discovery, cataloging, digital libraries, virtual reference, resource sharing

Scope

40+ million search requests processed each day by OCLC systems

Research

OCLC Research focuses on research collections and support, understanding the system-wide library, data science and user studies.

Community programs

WebJunction™, Outside the Box™, Geek the Library™

Breakthroughs depend on access to knowledge. Together, member institutions, individual librarians, partners and staff believe in that mission to share knowledge. And we believe that, together, we can do more.

Because what is known must be shared.

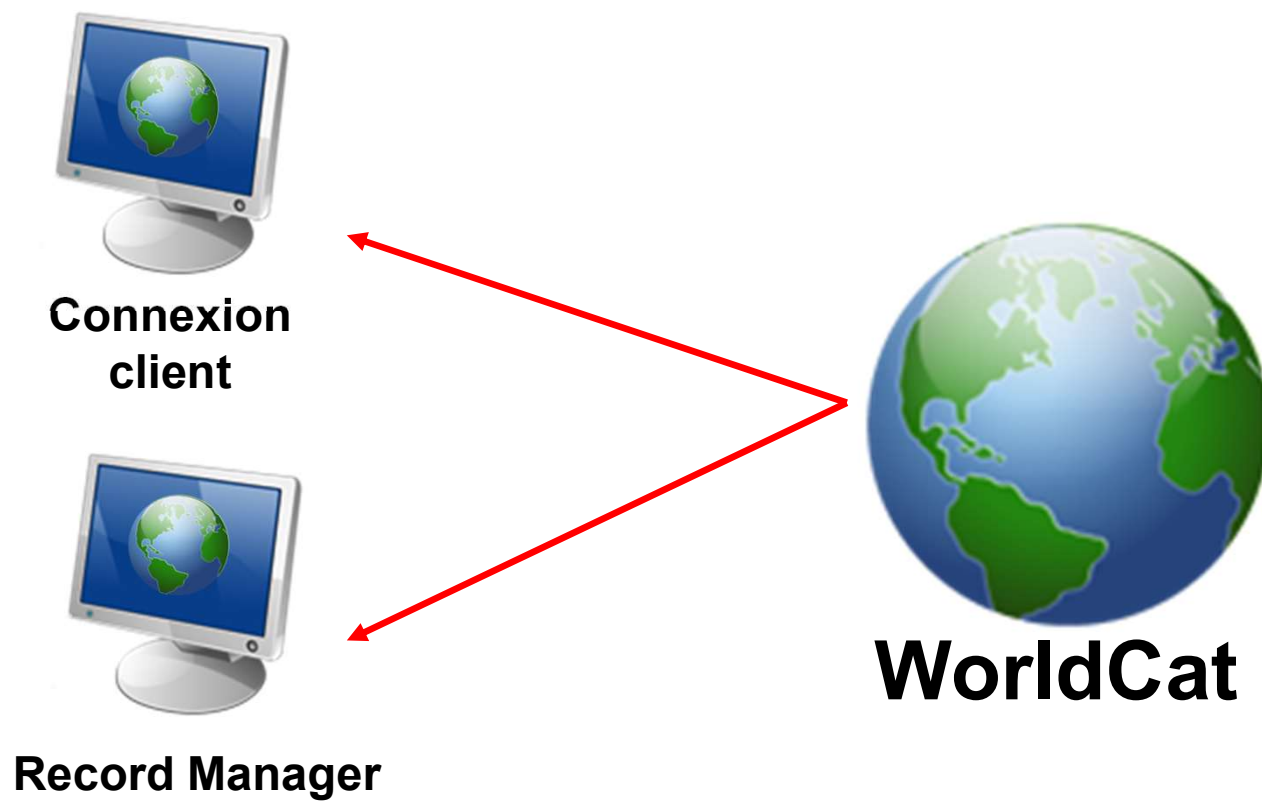
About OCLC: <https://www.oclc.org/en/about.html>



is the world's largest bibliographic database filled with millions of popular and unique items

- WorldCat statistics:
<https://www.oclc.org/en/worldcat/inside-worldcat.html>
- Watch WorldCat grow:
<https://www.oclc.org/en/worldcat/watch-worldcat-grow-popup.html>

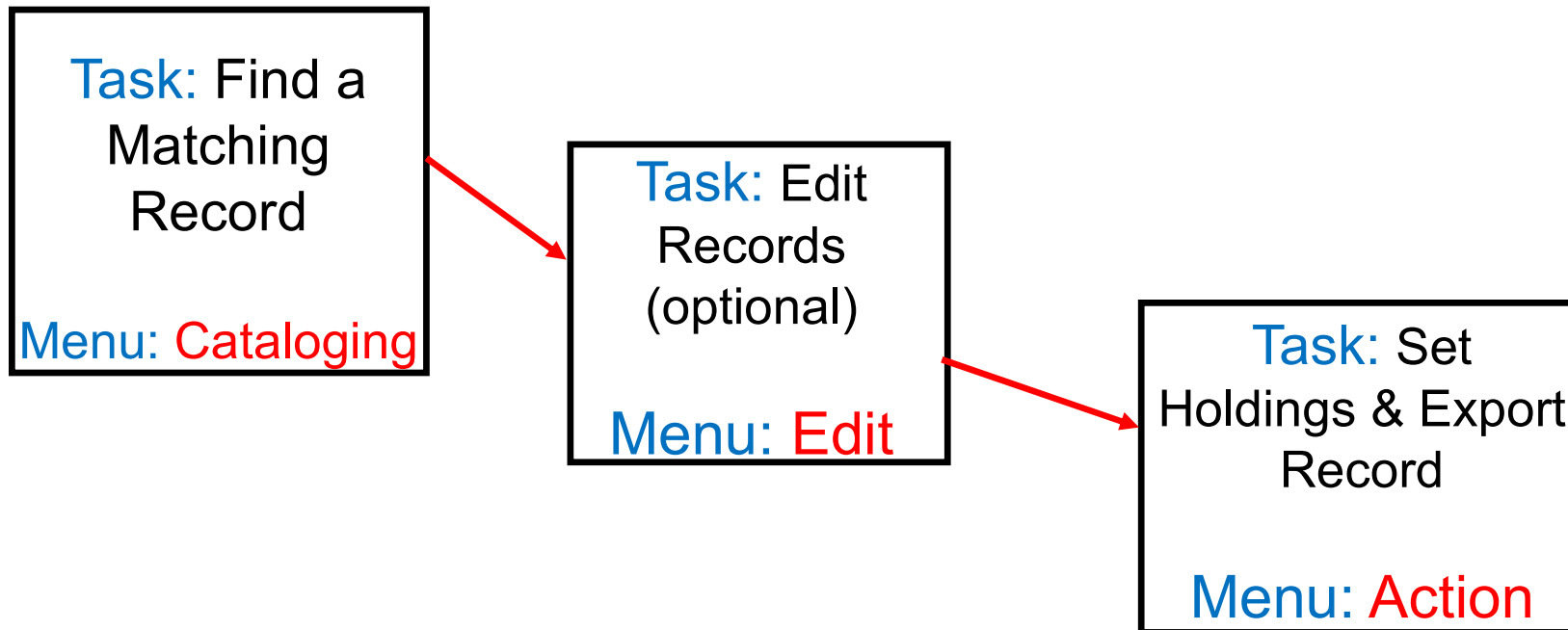
Cataloging Interfaces to WorldCat



WorldCat record vs. working copy of record

- WorldCat records
 - Each manifestation of a title has one WorldCat record
 - Libraries attach holdings to matching WorldCat record
- Working copy of record
 - Enables multiple libraries to view same record simultaneously
 - Edits do not affect the WorldCat record.
 - Use Export to transfer your edited record to your local catalog

The Copy Cataloging Workflow



Record match fields

Compare information in these fields against the item you want to catalog

- 245 (title)
- 250 (edition statement)
- 260 or 264 (publisher)
- 300 (physical description)

A significant difference in any of these fields between the item to be cataloged and the bibliographic record means that the record is NOT a match

QUESTIONS & ANSWERS

Where can you enter a default authorization and setup start options for Connexion client?

PICK ONE

- A. Tools > Options
- B. File > Logon
- C. Actions > Holdings
- D. Cataloging > Search

Where can you enter a default authorization and setup start options for Connexion client?

PICK ONE

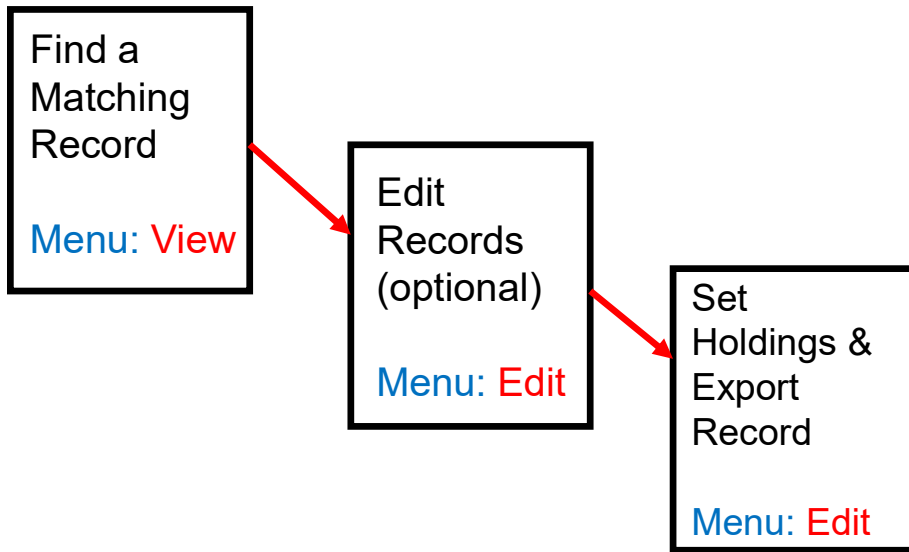
- A. Tools > Options**
- B. File > Logon
- C. Actions > Holdings
- D. Cataloging > Search

T H I S

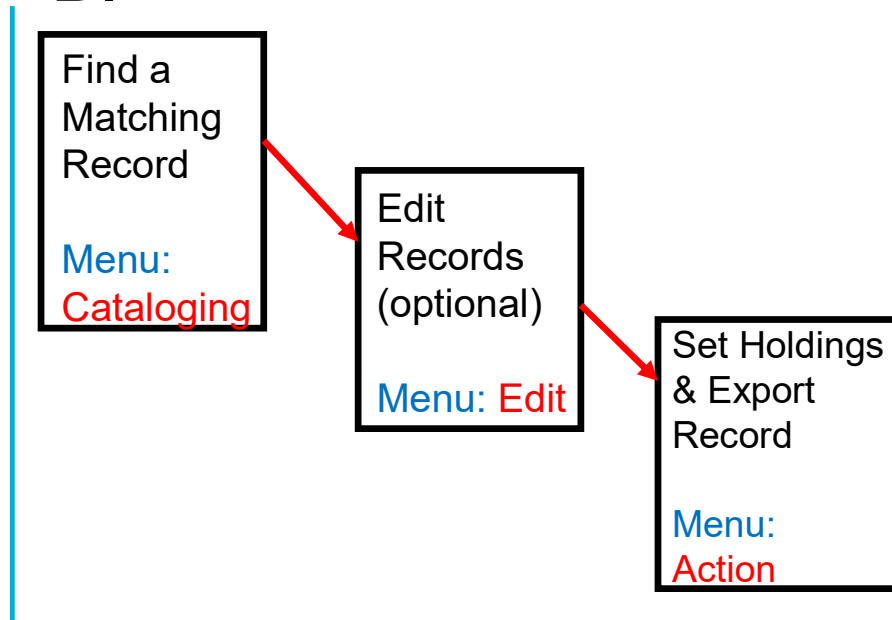
THAT

Which photo demonstrates the correct **menu order** for the copy catalog workflow?

A.



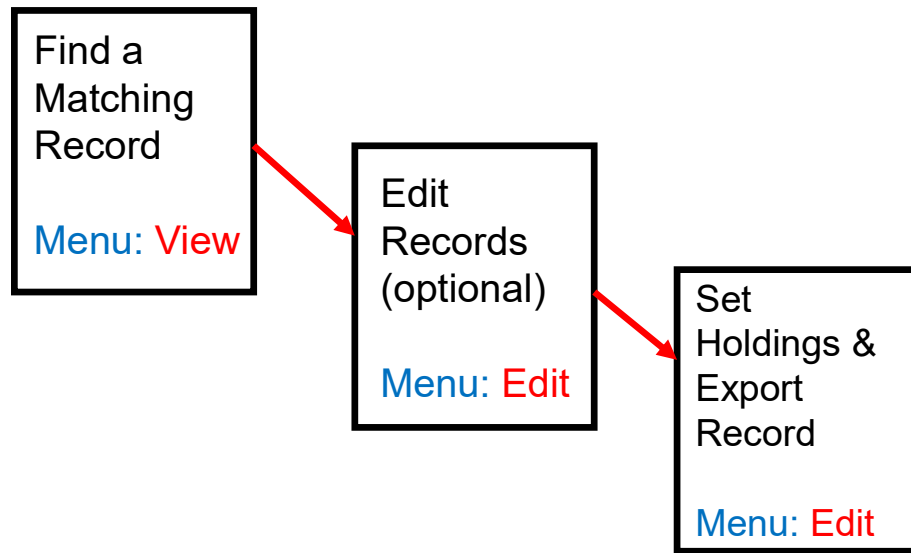
B.



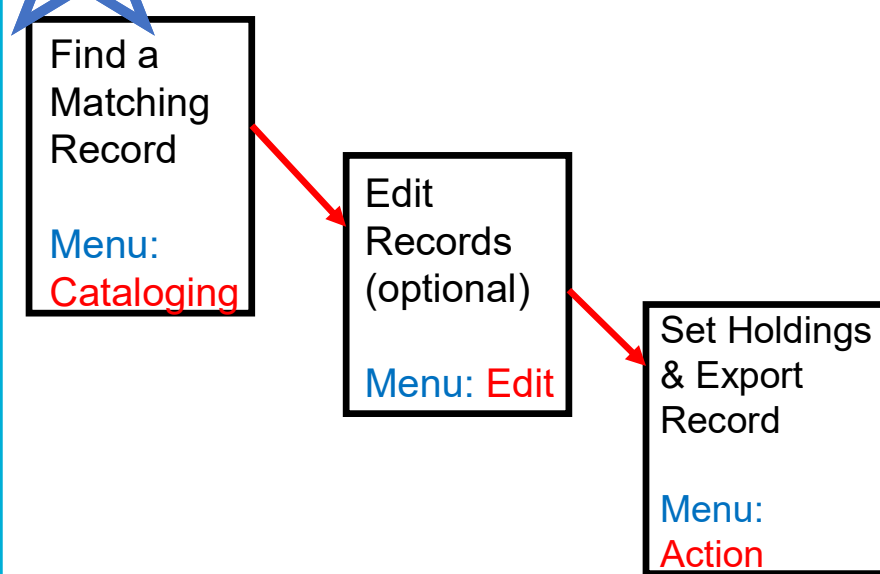
THIS *or* THAT

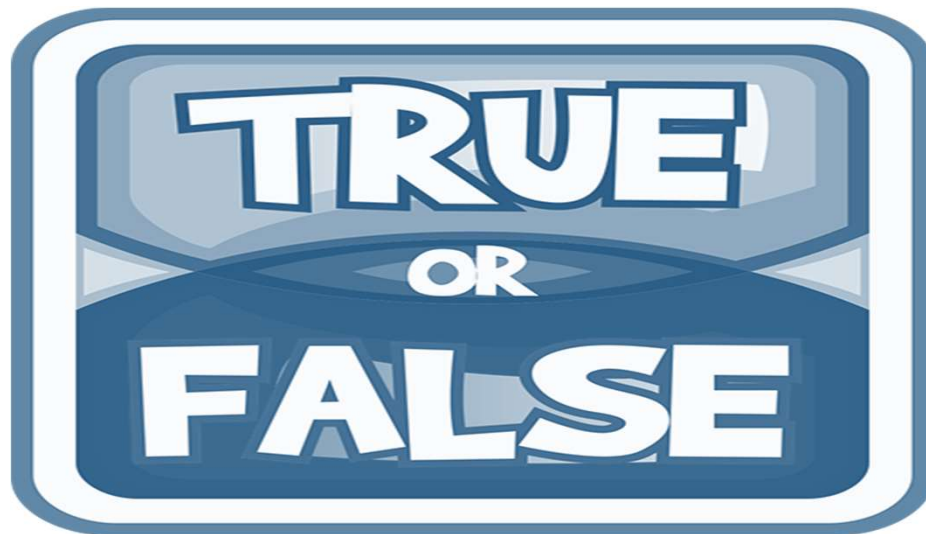
Which photo demonstrates the correct **menu order** for the copy catalog workflow?

A.

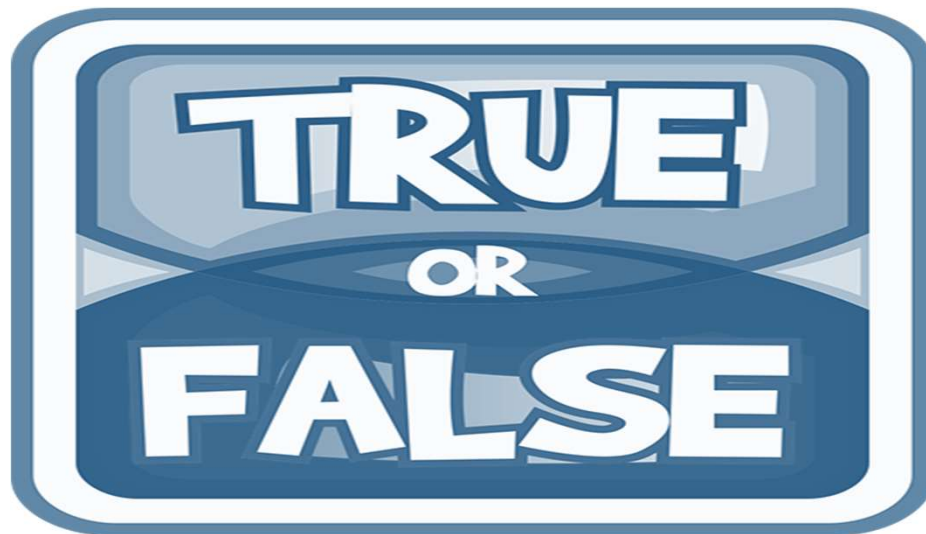


B.





If you edit a record in Connexion, the changes you make are automatically reflected on the WorldCat record for others to use?



If you edit a record in Connexion, the changes you make are automatically reflected on the WorldCat record for others to use?

Answer: False

Questions?

<https://help.oclc.org>

OCLC

System Status Dashboard Contact OCLC Support

Welcome to OCLC Support

How can we help you?

Search

Select a category

- Discovery and Reference
- Library Management
- Metadata Services
- Resource Sharing

<https://oclc.org/support>

OCLC support regions

Region	Location	Contact information
Asia Pacific	OCLC Asia Pacific 6565 Kilgour Place Dublin, Ohio 43017 US	O: +1-614-764-6009 Send an email Submit/View requests
Australia and New Zealand	OCLC Support—Australia and New Zealand Level 8, 310 King Street Melbourne 3000, Victoria AU	T: 1300 260 795 (local call w O: +61 (0) 3 9929 0800 Send an email Submit/View requests
United States	OCLC Support—United States 6565 Kilgour Place Dublin, Ohio 43017 US	T: 1-800-848-5800 (toll free in USA and Canada) O: +1-614-793-8682 Send an email Submit/View requests

Thank You!

Please remember to fill out the evaluation for this class

- Instructor: Crystal Rodriguez
- Category: Cataloging and Metadata
- Class name: Connexion 1 – Foundations of Connexion

Training questions? Contact OCLC Training [training@oclc.org/](mailto:training@oclc.org)